

Sotheby's EST. 1744



FINE JEWELS

NEW YORK 17 OCTOBER 2017



FRONT COVER: LOT 67, 104 & 200

BACK COVER: LOTS 304

THIS PAGE: LOTS 36 & 98



FINE
JEWELS



THIS PAGE
LOTS 74 & 129





FINE JEWELS

AUCTION IN NEW YORK
17 OCTOBER 2017
SALE N09692

SESSION ONE: 10:00 AM
SESSION TWO: 2:00 PM

Certificates of Authenticity Various manufacturers may not issue certificates of authenticity upon request. Sotheby's is not under an obligation to furnish the purchaser with a certificate of authenticity from the manufacturer at any time. Unless the requirements for a rescission of the sale under the Terms of Guarantee are satisfied, the failure of a manufacturer to issue a certificate will not constitute grounds to rescind the sale.

Gemological Certificates and Reports References in the catalogue descriptions to certificates or reports issued by gemological laboratories are provided only for the information of bidders, and Sotheby's does not guarantee and accepts no responsibility for the accuracy, terms or information contained in such certificates or reports. Please also note that laboratories may differ in their assessment of a gemstone (including its origin and presence, type and extent of treatments) and their certificates or reports may contain different results.

EXHIBITION

Friday 13 October
10 am-5 pm

Saturday 14 October
10 am-5 pm

Sunday 15 October
1 pm-5 pm

Monday 16 October
10 am-5 pm

Tuesday 17 October
10 am-12pm (Session Two only)

1334 York Avenue
New York, NY 10021
+1 212 606 7000
sothebys.com

BIDNOW
LIVE ONLINE BIDDING

Sotheby's EST. 1744

SPECIALISTS FOR THIS SALE



David Bennett
Worldwide Chairman
International Jewelry Division
david.bennett@sothebys.com



Gary Schuler
Chairman
gary.schuler@sothebys.com



Carol Elkins
carol.elkins@sothebys.com



Frank Everett
Sales Director
frank.everett@sothebys.com



Catharine Becket
catharine.becket@sothebys.com



Esther Tadjiev
Sales Development
esther.tadjiev@sothebys.com



Robin Wright
robin.wright@sothebys.com



Quig Bruning
quig.bruning@sothebys.com



Kendall Reed
kendall.reed@sothebys.com



Nikita Manilal
nikita.manilal@sothebys.com



Mallory Landers
Project Manager
mallory.landern@sothebys.com



Yang Bu
Business Director
yang.bu@sothebys.com



Vivian Chen
Associate Cataloguer
vivian.chen@sothebys.com



Lexy Damianos
Associate Cataloguer
lexy.damianos@sothebys.com

SPECIALISTS AND AUCTION ENQUIRIES

For further information on lots in this auction please contact any of the specialists listed below.

SALE NUMBER

N09692 "AERIN"

BIDS DEPARTMENT

+1 212 606 7414

FAX +1 212 606 7016

bids.newyork@sothebys.com

Telephone bid requests should be received 24 hours prior to the sale. This service is offered for lots with a low estimate of \$5,000 and above.

PRIVATE CLIENT GROUP

Brad Bentoff

Carolyn Floersheimer

Olivia de Grelle

Geraldine Nager

Alejandra Rossetti

David Rothschild

Lily Snyder

+1 212 894 1796

ASIA CLIENT LIAISON

Yin Zhao

+1 212 894 1685

yin.zhao@sothebys.com

CONSULTANT

Lexi Yost

HEAD OF FINE JEWELS SALES

Kendall Reed

kendall.reed@sothebys.com

Nikita Manilal

nikita.manilal@sothebys.com

+1 212 606 7392

FAX +1 212 606 7014

SALE ADMINISTRATOR

Barbara Waginski

barbara.waginski@sothebys.com

+1 212 894 1033

FAX +1 212 606 7014

POST SALE SERVICES

Ashlyn Michalakakis

Post Sale Manager

ashlyn.michalakakis@sothebys.com

+1 212 606 7444

PAYMENT, DELIVERY AND COLLECTION

+1 212 606 7444

FAX +1 212 606 7043

uspostsaleservices@sothebys.com

CATALOGUE PRICE

\$45 at the gallery

FOR SUBSCRIPTIONS CALL

+1 212 606 7000 USA

+44 (0)20 7293 5000

for UK & Europe

CONDITION REPORTS

Sotheby's Jewelry department is pleased to offer to potential purchasers Condition Reports of the lots in this catalogue. A Condition Report is an opinion describing in more depth the lot with regards to, but not limited to, the general condition, quality of stones and/or other relevant information.

Please contact:

newyorkjewels@sothebys.com

+1 212 606 7392

DECORATIVE PHOTOGRAPHY

SquareMoose

New York

+1 212 643 2505



THIS PAGE
LOT 28

CONTENTS

5	AUCTION INFORMATION
6	SPECIALISTS & AUCTION ENQUIRIES
10	SESSION ONE: LOTS 1-159
80	SESSION TWO: LOTS 160-310
157	ABSENTEE BID FORM
159	CONDITIONS OF SALE
160	TERMS OF GUARANTEE
161	ADDITIONAL TERMS AND CONDITIONS FOR LIVE ONLINE BIDDING BUYING AT AUCTION
164	SELLING AT AUCTION
165	SOTHEBY'S SERVICES INFORMATION ON SALES AND USE TAX IMPORTANT NOTICES
167	DIAMOND CLARITY GRADING DIAMOND COLOR GRADING GLOSSARY OF TERMS
168	INDEX OF DIAMONDS
169	COLORED STONE LIST
170	RING SIZE CHART
171	INTERNATIONAL DEPARTMENTS
172	INDEX OF MAKERS

SESSION ONE

NEW YORK
TUESDAY
17 OCTOBER 2017
10AM

LOTS 1-159

Please note these lots are
not shown in actual size





1

PROPERTY FROM A NEW YORK ESTATE

Diamond Brooch, Marianne Ostier

Of foliate design, set with numerous round, baguette, pear and marquise-shaped diamonds, with maker's mark; circa 1960.

US\$ 10,000-15,000



2

PROPERTY FROM A NEW YORK ESTATE

Pair of Diamond Earclips, Van Cleef & Arpels

Of cluster design, set with round diamonds, signed *Van Cleef & Arpels*, numbered *N.Y. 7698*. With signed box.

US\$ 15,000-20,000



PROPERTY FROM A NEW YORK ESTATE

Coral and Chrysoprase Pendant-Necklace, Van Cleef & Arpels, France

The necklace composed of textured gold links alternating with coral and chrysoprase cabochons, *length 21 inches, signed Van Cleef & Arpels, numbered 13268 CS, with French workshop and assay marks; circa 1970.* The pendant-brooch similarly set, *signed VCA, numbered 13V455-3, with French workshop and export mark; circa 1970.*

Please note this lot is restricted to US only buyers due to endangered species materials.

● US\$ 15,000-20,000



PROPERTY FROM A NEW YORK ESTATE

Gold and Diamond Necklace, David Webb

Composed of textured gold links accented with floret motifs set with round diamonds, gross weight approximately 212 dwts, *length 36¼ inches, detachable into two segments measuring 7¼ and 29 inches allowing for variety of wear, signed Webb.*

US\$ 20,000-30,000





5

PROPERTY FROM A DISTINGUISHED PRIVATE COLLECTION, NEW YORK, SOLD TO BENEFIT CHARITABLE INITIATIVES

Pair of Gold and Sapphire Earclips and Bracelet

Of zig-zag design, composed of alternating lines of round sapphires and beaded gold work, total gross weight approximately 85 dwts, *bracelet length 6¾ inches, bracelet signed Tiffany & Co., earclips numbered 156452.*

US\$ 6,000-8,000



6

PROPERTY FROM A DISTINGUISHED PRIVATE COLLECTION, NEW YORK, SOLD TO BENEFIT CHARITABLE INITIATIVES

Gold and Sapphire Brooch, Tiffany & Co.

Of spray design, centering a half dome of round sapphires, gross weight approximately 24 dwts, *signed Tiffany & Co, Italy. With signed box.*

US\$ 3,000-5,000



7

PROPERTY FROM A DISTINGUISHED PRIVATE COLLECTION, NEW YORK, SOLD TO BENEFIT CHARITABLE INITIATIVES

Pair of Diamond Earclips, David Webb

The bombé centers set with round diamonds, framed by a foliate motif set with single-cut diamonds, *signed Webb.*

US\$ 5,000-7,000

8

PROPERTY FROM A DISTINGUISHED PRIVATE COLLECTION, NEW YORK, SOLD TO BENEFIT CHARITABLE INITIATIVES

Cultured Pearl and Diamond Necklace

Of graduated design, composed of 59 cultured pearls measuring approximately 10.2 to 5.0 mm, the clasp featuring a marquise-shaped diamond, length 17½ inches, the clasp signed Cartier.

Accompanied by GIA report no. 6183397483 stating that the pearls are bead cultured, saltwater.

US\$ 10,000-15,000



9

PROPERTY FROM A DISTINGUISHED PRIVATE COLLECTION, NEW YORK, SOLD TO BENEFIT CHARITABLE INITIATIVES

Pair of Enamel and Diamond Brooches

Designed as ladybugs, the head and articulated wings applied with red and black enamel, accented by bezel-set round diamonds, the body further accented by round diamonds.

US\$ 3,000-5,000



10

PROPERTY FROM A DISTINGUISHED PRIVATE COLLECTION, NEW YORK, SOLD TO BENEFIT CHARITABLE INITIATIVES

Diamond Clip, Cartier

Of geometric design, set with old European, round and single-cut diamonds, signed Cartier, numbered 5907; circa 1930s.

US\$ 3,000-5,000



11



PROPERTY FROM A DISTINGUISHED PRIVATE COLLECTION, NEW YORK, SOLD TO BENEFIT CHARITABLE INITIATIVES

Gem-Set and Diamond Ring, Van Cleef & Arpels, France

Of floral design, centering a round cabochon ruby, accented by rubies, sapphires and emeralds, surrounded by numerous round diamonds, size 6¾, signed VCA, Made in France, numbered NY 5K912-1, with French assay and workshop marks.

US\$ 5,000-7,000



12

PROPERTY FROM A DISTINGUISHED PRIVATE COLLECTION, NEW YORK, SOLD TO BENEFIT CHARITABLE INITIATIVES

Gold Bracelet, Cartier

Composed of gold curb links, gross weight approximately 106 dwts, length 7¼ inches, signed Cartier, partially numbered 9965.

US\$ 4,000-6,000



13

PROPERTY FROM A DISTINGUISHED PRIVATE COLLECTION, NEW YORK, SOLD TO BENEFIT CHARITABLE INITIATIVES

Lapis Lazuli and Diamond Ring, Van Cleef & Arpels, France

Designed as an overlapping band, set with lapis lazuli polished in a quilted motif, bordered by round diamonds, size 6, signed Van Cleef & Arpels, Made in France, numbered NY 5K803-1, with French assay and workshop marks.

US\$ 3,000-5,000

14

PROPERTY FROM A DISTINGUISHED PRIVATE COLLECTION, NEW YORK, SOLD TO BENEFIT CHARITABLE INITIATIVES

Natural Pearl and Diamond Ring, Van Cleef & Arpels

Of crossover design, set with a dark gray natural pearl measuring approximately 10.5 by 9.0 mm, embellished with round diamonds, size 6¼, signed VCA, numbered NY 2504.

Accompanied by GIA report no. 2181468488 stating that the pearl is natural, saltwater, with no indications of treatment.

US\$ 6,000-8,000



15

PROPERTY FROM A DISTINGUISHED PRIVATE COLLECTION, NEW YORK, SOLD TO BENEFIT CHARITABLE INITIATIVES

Pair of Gold and Diamond Earclips, David Webb

Composed of textured gold beads, each set with a bezel-set round diamond, accented by smaller polished gold beads, signed Webb.

US\$ 4,000-6,000



16

PROPERTY FROM A DISTINGUISHED PRIVATE COLLECTION, NEW YORK, SOLD TO BENEFIT CHARITABLE INITIATIVES

Diamond Brooch, Van Cleef & Arpels

Designed as a ribbon, set with baguette diamonds, accented by round diamonds, signed Van Cleef & Arpels N.Y., numbered 18971-2.

US\$ 6,000-8,000





17

PROPERTY FROM A DISTINGUISHED PRIVATE COLLECTION, NEW YORK, SOLD TO BENEFIT CHARITABLE INITIATIVES

Pair of Rock Crystal and Diamond Clips

Of geometric design, centering round, old European-cut, single-cut and baguette diamonds, framed by a shield-shaped rock crystal construction, *numbered 0792 and 0779; circa 1935.*

US\$ 8,000-12,000



18

PROPERTY FROM A DISTINGUISHED PRIVATE COLLECTION, NEW YORK, SOLD TO BENEFIT CHARITABLE INITIATIVES

Diamond and Green Sapphire Ring, Van Cleef & Arpels

The oval-shaped diamond weighing 3.19 carats, claw-set between oval-shaped green sapphires, the shoulders accented by round diamonds, size 6, *signed VCA, numbered NY 2503.*

US\$ 10,000-15,000



19

PROPERTY FROM A DISTINGUISHED PRIVATE COLLECTION, NEW YORK, SOLD TO BENEFIT CHARITABLE INITIATIVES

Diamond and Emerald Pin, France

Designed as the silhouette of a panther, set with round diamonds and a pear-shaped emerald eye, *with French assay and workshop marks.*

US\$ 5,000-7,000

20

PROPERTY FROM A DISTINGUISHED PRIVATE COLLECTION, NEW YORK, SOLD TO BENEFIT CHARITABLE INITIATIVES

Turquoise and Diamond Necklace, France

Set with turquoise cabochons, accented by single-cut diamonds, spaced by baguette diamonds, *length 20¾ inches, with a removable segment measuring 6¼ inches, numbered 7200, with French assay and workshop marks; circa 1930s.*

US\$ 6,000-8,000



21

PROPERTY FROM A DISTINGUISHED PRIVATE COLLECTION, NEW YORK, SOLD TO BENEFIT CHARITABLE INITIATIVES

Diamond Bracelet

Composed of flexible panels of scrollwork design, joined by rectangular-shaped links, set with round, old European-cut, baguette and single-cut diamonds, *length 6½ inches.*

US\$ 6,000-8,000



22

PROPERTY FROM A DISTINGUISHED PRIVATE COLLECTION, NEW YORK, SOLD TO BENEFIT CHARITABLE INITIATIVES

Rock Crystal, Diamond and Sapphire Clip

Composed of a carved rock crystal plaque, embellished with two old European-cut diamonds and two square-cut sapphires, accented by single-cut diamonds; *circa 1930.*

US\$ 6,000-8,000



23

PROPERTY FROM A DISTINGUISHED PRIVATE COLLECTION, NEW YORK, SOLD TO BENEFIT CHARITABLE INITIATIVES

Coral Ring, Van Cleef & Arpels, France

Of bombé form, composed of red coral, embellished with gold crossover accents, size 6½, signed VCA, numbered NY 5K383-3, with French assay and workshop marks.

Please note this lot is restricted to US only buyers due to endangered species materials.

● US\$ 3,000-5,000



24

PROPERTY FROM A DISTINGUISHED PRIVATE COLLECTION, NEW YORK, SOLD TO BENEFIT CHARITABLE INITIATIVES

Onyx, Coral and Diamond Pendant-Brooch, Van Cleef & Arpels, Italy

Of geometric design, set with layered pieces of polished onyx and coral, highlighted with round diamonds, signed VCA, Italy; circa 1965.

Please note this lot is restricted to US only buyers due to endangered species materials.

● US\$ 7,500-10,000



25

PROPERTY FROM A DISTINGUISHED PRIVATE COLLECTION, NEW YORK, SOLD TO BENEFIT CHARITABLE INITIATIVES

Onyx and Diamond Ring, Van Cleef & Arpels, France

Set with polished onyx, accented with round diamonds, size 6½, signed VCA, numbered NY 5K882-4, with French assay and workshop marks.

US\$ 3,000-5,000



26

PROPERTY FROM A DISTINGUISHED PRIVATE COLLECTION, NEW YORK, SOLD TO BENEFIT CHARITABLE INITIATIVES

Gold and Diamond Pendant-Necklace, David Webb

Composed of fluted gold links, the pendant in the shape of a Maltese cross, pavé-set at the center with round diamonds, *length 27 inches, the chain separates into three segments measuring 12½, 7¼ and 7¼ inches for variety of wear, signed Webb.*

US\$ 20,000-30,000



27

PROPERTY FROM A DISTINGUISHED PRIVATE COLLECTION, NEW YORK, SOLD TO BENEFIT CHARITABLE INITIATIVES

Diamond Ring, Van Cleef & Arpels

Set with a round diamond weighing 10.53 carats, with baguette diamond shoulders, *size 7¼, signed VCA, numbered NYSO 4050.*

Accompanied by GIA report no. 1182383306 stating that the diamond is M color, VS2 clarity.

US\$ 50,000-70,000



28

PROPERTY FROM A DISTINGUISHED PRIVATE COLLECTION, NEW YORK, SOLD TO BENEFIT CHARITABLE INITIATIVES

Gold Bracelet, Wander

Of geometric design, composed of gold stud motifs, *gross weight approximately 100 dwts, length 7 inches, signed Wander.*

US\$ 6,000-8,000





29

Gold and Lapis Lazuli Bangle-Bracelet, Cartier, Paris

The polished gold bangle embellished with lapis lazuli cabochons, *internal circumference 8¼ inches, signed Cartier Paris, numbered 03720; circa 1950.*

For a bracelet of similar design, see Cartier: Innovation through the 20th Century by Elena Gagarina and Bernard Fornas, page 220.

US\$ 10,000-15,000



△ 30

Gold and Coral Brooch, Cartier, Paris

The polished gold safety pin with articulated gold beads, decorated with sugarloaf coral cabochons, *signed Cartier Paris, numbered 3985, with French assay and indistinct maker's marks; circa 1930s.*

A brooch of similar design, decorated with lapis lazuli, is illustrated in Art Deco Jewelry: 1920-1949 by Melissa Gabardi, page 209.

Please note this lot is restricted to US only buyers due to endangered species materials.

● **US\$ 5,000-7,000**

31

Gold and Ruby 'Escalier' Bracelet, Boucheron, Paris

Designed in a step formation, composed of polished gold links, accented by square-cut rubies, length $7\frac{1}{4}$ inches, signed Boucheron, Paris, numbered 2271, with French assay and maker's mark; circa 1940.

The present bracelet with its fluid stepped design is known as the 'moving staircase'. A similar bracelet in gold with emeralds is illustrated in Art Deco Jewellery: 1920-1949, by Melissa Gabardi, page 199.

US\$ 25,000-35,000



32

PROPERTY FROM A PRIVATE COLLECTION, DALLAS,
TEXAS

Diamond Ring

Bezel-set with a round diamond, accented by baguette diamond shoulders, gross weight approximately 18 dwts, size $7\frac{1}{4}$.

US\$ 20,000-30,000



33

Gold Bracelet, Boucheron

Composed of polished and textured gold links, gross weight approximately 37 dwts, length $7\frac{1}{2}$ inches, signed Boucheron, with British hallmarks; circa 1950s.

US\$ 7,500-10,000





THIS PAGE
LOTS 57 & 159



Fancy Intense Yellow Diamond and Diamond Ring, Schlumberger for Tiffany & Co., France

Centering a Fancy Intense Yellow diamond weighing 3.05 carats, within a gold caged surround embellished with diamond-set leaves, size 3½, signed *Tiffany Schlumberger*, numbered 2157 489, with French workshop and export mark.

Accompanied by GIA report no. 1162578705 stating that the diamond is *Fancy Intense Yellow, Natural Color, VS2 clarity*.

US\$ 30,000-40,000



(side view)

Pair of Diamond Pendant-Earclips, Schlumberger for Tiffany & Co.

The tops designed as ribbon motifs, supporting detachable pendant drops, set with round diamonds, signed *Schlumberger-Tiffany & Co.* Fitted with posts.

US\$ 20,000-30,000



36

PROPERTY FROM THE ESTATE OF VIRGINIA RIDDER

**Pair of Cultured Pearl and Diamond
Earclips, David Webb**

Set with two cultured pearls measuring approximately 12.0 mm each, accented by round diamonds, *signed Webb*.

US\$ 6,000-8,000



37

PROPERTY FROM A PRIVATE COLLECTION,
NEW YORK

Garnet Clip-Brooch, René Boivin, France

Designed as a leaf, set with round and marquise-shaped garnets, *numbered 5945 and 59, with French assay and maker's marks; circa 1940.*

US\$ 8,000-12,000



38

**Gold and Diamond Cuff-Bracelet,
Buccellati**

The brushed gold cuff-bracelet set with round diamonds, gross weight approximately 63 dwts, *internal circumference 7 inches, signed M. Buccellati, with Italian assay and registry marks.* With signed box.

US\$ 40,000-60,000





39

Gold and Coin Necklace, Bulgari

The curb link chain centering a silver Liberty coin, gross weight approximately 113 dwts, length 15³/₄, signed Bulgari, numbered B487.

US\$ 8,000-12,000



40

Gold, Diamond, Sapphire and Mother-of-Pearl 'Imperiale' Wristwatch, Chopard

Composed of a square mother-of-pearl dial and an engine-turned subsidiary dial for constant seconds, with gold markers and Roman numeral indicators, framed by round diamonds, the lugs and crown set with cabochon sapphires, quartz movement, gross weight approximately 83 dwts, internal circumference 6¹/₄ inches, the dial signed Chopard Genève, the caseback and strap signed Chopard, numbered 38/3448-23, 699157 and 5272, with Swiss assay mark. With signed box.

Please note this lot is restricted to US only buyers due to endangered species materials.

© **US\$ 9,000-12,000**



41

PROPERTY OF A PRIVATE COLLECTOR

Gold and Colored Diamond Bangle-Bracelet

Set with calibr -cut diamonds of yellow hue, internal circumference 6¹/₂ inches.

Please note the diamonds of yellow hue have not been tested for natural origin of color.

US\$ 20,000-30,000

42

PROPERTY OF A LADY

Gold and Malachite 'Alhambra' Necklace, Van Cleef & Arpels

Composed of alternating textured gold and malachite quatrefoil-shaped links, *length 16½ inches, signed VCA, numbered BL 281342 and N° 59. With signed box.*

Accompanied by a Certificate of Authenticity from Van Cleef & Arpels.

US\$ 7,000-9,000



43

Gold, Colored Stone and Diamond Bracelet, Boucheron, Paris

The braided ropework design set with round diamonds, rubies, emeralds and sapphires, gross weight approximately 61 dwts, *length 5¾ inches, signed Boucheron Paris, with French assay and workshop marks.*

US\$ 5,000-7,000



44

Pair of Ruby and Diamond Earclips, David Webb

Of bombé form, set with cabochon rubies accented by round diamonds, the hinged backs set with beaded goldwork, *signed Webb.*

US\$ 8,000-12,000



45

PROPERTY OF AN IMPORTANT PRIVATE COLLECTOR

Gold and Diamond Necklace and Bracelet

Designed as three braided strands, one of polished gold, one of fluted gold, and one pavé-set with round diamonds, *necklace length 16 inches, bracelet 6½ inches, four diamonds missing.*

US\$ 15,000-20,000



46

Gem-Set and Diamond Brooch, Cartier

Designed as a dragon, composed of fluted lapis lazuli, accented by turquoise, emerald, and sapphire cabochons, further set with round diamonds, the articulated legs similarly set with sapphire cabochons and round diamonds, *signed Cartier, numbered 31064. With signed box.*

US\$ 25,000-35,000



47

PROPERTY FROM A PRIVATE COLLECTION

Pair of Emerald and Diamond Earclips, David Webb

Each centering an oval-shaped cabochon emerald, within a kite-shaped frame set with two rows of round diamonds, *signed David Webb.*

US\$ 5,000-7,000



△ 48

Emerald and Diamond Necklace- Bracelet Combination

Designed as a series of kite-shaped motifs set with round diamonds, alternating with pear-shaped links set with cabochon emeralds and round diamonds, *length 19¾ inches, with five removable segments for variety of wear measuring 7, 7, 4½, 3½, 3 and 2¼ inches, four segments signed VCA, each segment numbered, with French assay and maker's marks.*

US\$ 30,000-50,000



49

Diamond and Colored Stone 'Panthère' Ring, Cartier

Designed as a panther, the articulated head and the body pavé-set with round diamonds, accented by cabochon sapphires, the eyes set with pear-shaped emeralds, the nose set with an onyx cabochon, *size 5, signed Cartier, numbered 636185. With signed box.*

US\$ 28,000-32,000



50

Diamond and Emerald Bracelet, Cartier, France

Composed of a line of elephant motifs set with round diamonds, accented by emerald-set eyes, *length 7½ inches, signed Cartier, numbered 648789, with French assay and maker's mark. With signed box.*

US\$ 40,000-60,000





51

PROPERTY OF A PRIVATE COLLECTOR

**Pair of Colored Diamond and Diamond
Pendant-Earclips, Cartier**

The surmounts set with round diamonds of near colorless and yellow hue, suspending a detachable drop-shaped pendant set with similar diamonds, *signed Cartier, numbered 37282, with French assay and maker's marks.*

Please note that the diamonds of yellow hue have not been tested for origin of color.

US\$ 25,000-35,000



52

PROPERTY FROM A COLORADO COLLECTION

**Platinum and Diamond Bracelet, Tiffany
& Co.**

The platinum mesh strap embellished with a buckle and two bands set with round diamonds, *length adjusts from 7½ to 6½ inches, signed Tiffany & Co.; circa 1997.*

US\$ 5,000-7,000



53

**Fancy Intense Yellow Diamond and
Diamond Ring, Bulgari**

Set with an oval-shaped Fancy Intense Yellow diamond weighing 3.12 carats, accented by pear-shaped diamonds, size 6, *signed Bulgari.*

Accompanied by GIA report no. 6187182764 stating that the diamond is Fancy Intense Yellow, Natural Color, VS2 clarity.

US\$ 35,000-45,000

△ 54

Pair of Diamond 'Frivole' Earclips, Van Cleef & Arpels, France

Designed as flowerheads, set with round diamonds, *signed VCA, numbered BL66348, with French assay and workshop marks. With signed box.*

Accompanied by a Certificate of Authenticity from Van Cleef & Arpels.

US\$ 6,000-8,000



55

PROPERTY FROM A PRIVATE COLLECTION

Diamond and Mother-of-Pearl 'Happy Sport' Chronograph Wristwatch, Chopard

The circular dial embellished with mother-of-pearl, framed by round diamonds, featuring free-floating collet-set diamonds between synthetic sapphire crystals, the crown set with a round sapphire, on a black leather strap, *quartz movement, the dial, caseback and buckle signed Chopard, the caseback numbered 1500850 8499.*

Please note this lot is restricted to US only buyers due to endangered species materials.

● **US\$ 6,000-8,000**



56

Diamond Ring

Centering an emerald-cut diamond weighing 4.17 carats, flanked by baguette diamonds, *inscribed 'M.R. to R.R. May 14 - 1943,' size 6.*

Accompanied by GIA report no. 6187430880 stating that the diamond is I color, VS2 clarity.

US\$ 18,000-22,000





57

PROPERTY OF A PRIVATE COLLECTOR

**Mystery-Set Sapphire and Diamond
Clip-Brooch, Van Cleef & Arpels**

Of floral design, mystery-set with calibr -cut sapphires, tapered baguette diamonds, and marquise-shaped diamond leaves, *signed Van Cleef & Arpels, numbered N.Y. 30830*. With signed box.

US\$ 60,000-80,000

58

Sapphire and Diamond Necklace

Featuring nine oval-shaped sapphires, further set with round, baguette and square-cut diamonds, length 16¾ inches.

US\$ 20,000-30,000



59

Pair of Diamond Earclips, Mounted by Cartier

Of floral design, set with an old European-cut diamond weighing 3.22 carats and an old mine-cut diamond weighing 3.19 carats, accented by variously-cut diamonds, *signed Cartier Mtg.*; circa 1960.

Accompanied by two GIA reports:

No. 2175573528 stating that the 3.22 carat diamond is J color, VS1 clarity.

No. 2175573533 stating that the 3.19 carat diamond is I color, VS2 clarity.

US\$ 50,000-70,000



60

Sapphire and Diamond Ring

Centering a cushion-cut sapphire weighing 5.19 carats, flanked by cushion-cut diamonds, size 5¾.

Accompanied by AGL report no. CS 84706 stating that the sapphire is of Burmese origin, with no indications of heating.

US\$ 30,000-40,000





61

Mystery-Set Ruby and Diamond Clip-Brooch, Van Cleef & Arpels, France

Designed as a flower, the petals mystery-set with calibr -cut rubies, the center, leaves and stems decorated by round and baguette diamonds, *signed VCA, numbered ML 1490, with French assay and maker's marks.*

US\$ 40,000-60,000



62

Ruby and Diamond Ring

Centering an oval-shaped ruby weighing 2.39 carats, within a surround of triangle-shaped diamonds, further highlighted by round diamonds, size 6.

Accompanied by GIA report no. 1249421304 stating that the ruby is of Burmese origin, with indications of heating.

US\$ 7,000-9,000



63

Mystery-Set Ruby and Diamond Clip-Brooch, Van Cleef & Arpels, France

Designed as a flower, the petals mystery-set with calibr -cut rubies, the center, leaves and stems decorated by round and baguette diamonds, *signed Van Cleef & Arpels, numbered SI535, with French assay and maker's mark.*

US\$ 15,000-20,000

64

PROPERTY FROM A PRIVATE COLLECTION

Sapphire and Diamond Bracelet

The stylized floral design composed of round diamonds, highlighted by pear-shaped sapphires, length $6\frac{7}{8}$ inches.

US\$ 12,000-15,000



65

PROPERTY OF A PRIVATE COLLECTOR

Three Pairs of Cufflinks, Fabergé and Jean Dunand

One pair set with calibré-cut rubies and round diamonds, *signed Fabergé, numbered 5/150, with maker's mark*; one pair similarly set with calibré-cut sapphires, *signed Faberge, numbered 54/150, with maker's mark*; one pair engraved with maker's signet framed by round diamonds, *signed Jean Dunand, with French assay and partial workshop marks*. The Fabergé cufflinks each with a box.

The ruby cufflinks accompanied by a certificate of authenticity from Fabergé.

US\$ 10,000-15,000



66

Sapphire and Diamond Ring, Mounted by Raymond Yard

Set with a cushion-cut sapphire weighing 2.07 carats, accented by cushion-cut diamond shoulders, further highlighted with old European, single-cut, round and baguette diamonds, size $5\frac{3}{4}$, *signed Yard*.

Accompanied by Gübelin report no. 16025148 stating that the sapphire is of Kashmir origin, with no indications of heating.

US\$ 10,000-15,000





THIS PAGE
LOTS 126 & 128



67

PROPERTY OF A PRIVATE COLLECTOR

Diamond Ring

Set with a pear-shaped diamond weighing 9.51 carats, flanked by tapered baguette diamonds, size 4 $\frac{3}{4}$.

Accompanied by GIA report no. 2185383437 stating that the diamond is H color, SI1 clarity.

US\$ 75,000-100,000



68

Diamond Necklace

Of swag design, suspending pear-shaped diamonds, spaced by floral motifs set with round diamonds, accented by baguette diamonds, length 15½ inches.

US\$ 20,000-30,000



69

PROPERTY OF A PRIVATE COLLECTOR

Pair of Natural Pearl and Diamond Earclips, Harry Winston

Each set with one white and one dark gray natural pearl measuring approximately 10.6 to 10.0 mm, embellished with pear and marquise-shaped diamonds, numbered A3529, with maker's mark for Jacques Timey.

Accompanied by GIA report no. 5181662111 stating that the four pearls are natural, saltwater; two with modified color.

US\$ 8,000-12,000



70

PROPERTY OF A LADY

Diamond Bracelet

Designed as an openwork geometric band set with old European-cut diamonds, highlighted with old European, round, baguette and single-cut and diamonds, length 7¼ inches; circa 1925.

US\$ 18,000-22,000





71

Emerald and Diamond Ring

Centering an oval-shaped mixed-cut emerald weighing 7.35 carats, framed and accented by pear-shaped and round diamonds, size 5 $\frac{3}{4}$, with French assay and workshop marks.

Accompanied by AGL report no. 1080819 stating that the emerald is of Colombian origin, clarity enhancement: minor, type: traditional.

US\$ 130,000-180,000

72

FORMERLY FROM THE COLLECTION OF MRS.
SEVERANCE MILLIKIN, CLEVELAND, OHIO

Emerald, Ruby and Diamond Brooch, Van Cleef & Arpels, France

Designed as a bird, centering an oval-shaped cabochon emerald, set with round diamonds, accented by round and cabochon rubies, *signed Van Cleef & Arpels, numbered 75450, with French assay and maker's marks; circa 1957.*

US\$ 10,000-15,000



73

PROPERTY OF A PRIVATE COLLECTOR, CALIFORNIA

Gold, Diamond and Ruby Bracelet, Van Cleef & Arpels, France

Of foliate design, composed of gold links, accented by round rubies and diamonds, gross weight approximately 37 dwts, length 6¾ inches, *signed Van Cleef & Arpels, Made in France, numbered 284-03.*

US\$ 6,000-8,000



74

PROPERTY OF A PRIVATE COLLECTOR, CALIFORNIA

Ruby and Diamond Brooch, Van Cleef & Arpels, France

Designed as a maiden holding a basket of ruby-set flowers, the dress and bonnet further set with round rubies and diamonds within polished and ropetwist gold, *signed Van Cleef & Arpels, Made in France, numbered 25127, with French export and workshop marks.*

US\$ 5,000-7,000





75

PROPERTY OF A FLORIDA LADY

**Gold and Diamond Necklace-Bracelet
Combination, Van Cleef & Arpels,
France**

The pendant composed of textured gold, accented by round diamonds, suspended by a similarly-set necklace, total gross weight approximately 202 dwts, length 28½ inches, with four removable segments for variety of wear each measuring 6¾ inches, all signed VCA, the brooch numbered 20153, the remainder of the links numbered 20020, 20019, 20018, 20017, with French assay and maker's marks, three diamonds missing.

US\$ 25,000-35,000



76

**Sapphire and Gem-Set Brooch, Tiffany
& Co., Schlumberger Studios, France**

Designed as a parrot, set with round sapphires, the beak embellished with a pear-shaped turquoise cabochon and black lacquer, the eye highlighted with a round ruby, the body and tail accented with yellow and green enamel, gross weight approximately 52 dwts, signed Tiffany & Co. Schlumberger Std., France.

For an illustration of a brooch of similar design, see Tiffany Jewels by John Loring, page 201.

US\$ 15,000-20,000



77

Pair of Coral Earclips, David Webb

Each set with coral beads accented by gold ropetwist, signed Webb.

Please note this lot is restricted to US only buyers due to endangered species materials.

© US\$ 8,000-12,000

78

Chrysoprase and Gold Necklace, Aldo Cipullo for Cartier

Composed of four chrysoprase links, centering a fluted chrysoprase bead, with gold accents, *internal circumference 15 inches, signed Cartier, A. Cipullo; circa 1970.*

US\$ 20,000-30,000



79

Gold 'Serpenti' Wristwatch, Bulgari

Designed as a coiled serpent, the round dial set with Roman numeral and baton indicators, the eyes set with two round rubies, quartz movement, gross weight approximately 93 dwts, *the dial signed Jaeger-LeCoultre, the caseback signed Bulgari, numbered 853060.*

US\$ 30,000-50,000





80

PROPERTY OF A LADY

Fancy Brown-Pink Diamond Ring

Set with a marquise-shaped Fancy Brown-Pink diamond weighing 3.42 carats, flanked by tapered baguette diamonds, size 6½.

Accompanied by GIA report no. 6187193035 stating that the diamond is Fancy Brown-Pink, Natural Color, SI1 clarity.

US\$ 80,000-120,000

81

PROPERTY FROM A PRIVATE COLLECTION,
BERKELEY, CALIFORNIA

Diamond Necklace

The highly flexible v-shaped design, set with round, baguette and marquise-shaped diamonds, length 15 inches.

US\$ 12,000-15,000



82

Pair of Rubellite and Diamond Earrings

Designed as leaves, suspending carved rubellites, framed and accented by round diamonds. Fitted with posts.

US\$ 8,000-12,000



83

Rubellite, Spinel and Diamond Ring

Set with a cushion-cut rubellite weighing approximately 11.52 carats, within a decorative mount accented with round near colorless diamonds and spinels, size 6¼.

US\$ 15,000-20,000





84

PROPERTY OF A LADY

Diamond Ring

Set with an emerald-cut diamond weighing 6.22 carats, size 5 $\frac{3}{4}$.

Accompanied by GIA report no. 1186144498 stating that the diamond is K color, VS1 clarity.

US\$ 35,000-45,000



85

PROPERTY OF A LADY

Diamond Bracelet, Tiffany & Co.

The flexible bracelet of geometric design, spaced by circular links, set with numerous round diamonds, length 6 $\frac{7}{8}$ inches, signed Tiffany & Co; circa 1925.

US\$ 10,000-15,000



86

Pair of Colored Diamond and Diamond Earrings

Suspending two cushion-cut diamonds of yellow hue, framed and accented by near colorless round diamonds.

US\$ 25,000-35,000

87

PROPERTY OF A GENTLEMAN

Diamond and Synthetic Emerald Necklace

Of crossover design, suspending a pear-shaped diamond and pear-shaped synthetic emerald, the necklace further set with numerous round, marquise-shaped and baguette diamonds, *length 16 inches.*

US\$ 18,000-22,000



88

Emerald and Diamond Ring

Centering an emerald-cut emerald weighing 7.74 carats, within a ballerina-setting of round and baguette diamonds, *size 5¾.*

Accompanied by AGL report no. 1086293 stating that the emerald is of Colombian origin, clarity enhancement: minor, type: traditional.

US\$ 25,000-35,000



89

PROPERTY OF A SOUTHERN FLORIDA COLLECTION

Diamond Ring

Set with a round diamond weighing 5.01 carats, accented by numerous baguette diamonds, *size 7¾. Illustrated unmounted.*

Accompanied by GIA report No. 2185674104 stating that the diamond is J color, VS1 clarity.

US\$ 40,000-60,000





90

PROPERTY FROM A TEXAS FAMILY

Diamond Ring and Band Ring

The ring set with a Lucida-cut diamond weighing 6.01 carats, flanked by trapeze-cut diamonds, further highlighted by round and square-cut diamonds; the band set with baguette diamonds highlighted by round diamonds, both size $7\frac{1}{4}$, numbered 16423 and 16416, the diamond laser inscribed Lucida.

Accompanied by GIA report no. 11304926, dated September 28, 2000, stating that the diamond is I color, VS1 clarity.

Accompanied by Tiffany & Co. Diamond Certificate S01284/B10050316 stating that the diamond is I color, VS1 clarity.

US\$ 60,000-80,000

91

Sapphire and Diamond Bracelet, Mounted by J.E. Caldwell

Composed of nine cushion-cut sapphires weighing 12.59 carats in total, spaced by marquise-shaped diamonds, accented by collet-set round diamonds, *length 7¼ inches, signed J.E.C. & Co., numbered P8343.*

Accompanied by nine AGL reports stating that the sapphires, ranging in size from 1.67 to 1.07 carats, are natural corundums, with no indications of heating.

The diamonds accompanied by nine GIA reports stating that the diamonds, ranging in size from 0.53 to 0.38 carats are D to F in color, VVS2 to SI1 in clarity.

US\$ 30,000-40,000



92

PROPERTY OF A PRIVATE COLLECTOR

Sapphire and Diamond Ring

Set with an emerald-cut sapphire measuring approximately 11.0 x 7.8 x 6.7 mm, framed by round diamonds, *size 6½.*

US\$ 10,000-15,000



93

Pair of Sapphire and Diamond Cufflinks

Each cushion-shaped face set with an oval-shaped and calibr -cut sapphires, accented by round diamonds.

US\$ 8,000-12,000





94

PROPERTY OF A LADY

Natural Pearl and Diamond Pendant-Necklace

The pendant set with old European, old mine and single-cut diamonds, supporting two semi-baroque drop-shaped natural pearls measuring approximately 11.6 by 10.8 mm and 11.3 by 9.7 mm, suspended from a chain set with rose-cut diamonds, *length 16¼ inches; the pendant circa 1900. With original box.*

Accompanied by GIA report no. 5182206816 stating that the pearls are natural, saltwater, with no indications of treatment.

US\$ 20,000-30,000



95

Pearl, Onyx and Diamond Wristwatch, Dreicer & Co.

The silvered dial with Roman numeral indicators and blued-steel hands, set with single and old European-cut diamonds, accented by French-cut onyx, with a cabochon onyx crown, completed by a bracelet composed of 52 pearls measuring approximately 4.8 to 1.7 mm, spaced by 24 seed pearls, manual movement, *length 6¾ inches, the dial signed Dreicer & Co.; circa 1925. Together with seven additional loose pearls.*

Accompanied by GIA report no. 5141707624 stating that the pearls are predominantly natural, saltwater.

Please note the seed pearls have not been tested for natural origin.

US\$ 6,000-8,000



96

Emerald and Diamond Ring

Set with a round mixed-cut emerald weighing 1.50 carats and a round diamond weighing approximately 1.25 carats, accented by baguette diamonds, *size 8¾.*

Accompanied by AGL report no. CS 69889-D stating that the emerald is of Colombian origin, clarity enhancement: none.

US\$ 25,000-35,000

97

Emerald and Diamond Necklace

The diamond line necklace set with round, marquise-shaped and baguette diamonds, decorated at intervals with square and emerald-cut emeralds, framed by baguette and marquise-shaped diamonds, *length 15 $\frac{3}{8}$ inches.*

US\$ 5,000-7,000



98

Diamond and Emerald Earrings

Of fringed design, suspending variously-cut diamonds, accented by round emeralds.

US\$ 15,000-20,000



99

Diamond and Emerald Ring

Set with a modified rhomboid-shaped diamond weighing 3.96 carats, framed by round emeralds and accented by round diamonds, size 6 $\frac{1}{2}$, *numbered 159547.*

Accompanied by GIA report no. 2183143671 stating that the diamond is E color, VS2 clarity.

US\$ 28,000-32,000





**Diamond and Emerald Clip-Brooch,
Mounted by Cartier**

Featuring a cushion-cut emerald weighing 3.92 carats and a cabochon emerald weighing 2.12 carats, mounted in a scrollwork design with an articulated fringe, set with round, old European-cut, half-moon-shaped, emerald-cut and baguette diamonds, *signed Cartier Mtg, numbered 53-47494.*

Accompanied by AGL report no. CS 71664 stating that the 3.92 carat emerald is of Colombian origin, clarity enhancement: insignificant to minor, type: traditional.

Accompanied by AGL report no. CS 71665 stating that the 2.12 carat emerald is of Colombian origin, clarity enhancement: insignificant, type: traditional.

US\$ 100,000-150,000

101

PROPERTY FROM A FLORIDA COLLECTION

Emerald and Diamond Ring, Ruser

Set with a cabochon emerald measuring approximately 15.7 x 13.5 x 7.8 mm, framed by marquise-shaped diamonds, the shoulders highlighted by round diamonds, size 4¼.

Accompanied by AGL report 1085064 stating that the emerald is of Colombian origin, clarity enhancement: minor, type: modern.

US\$ 18,000-22,000



102

Diamond and Emerald Bracelet

The flexible strap set with baguette, old European, rectangular-cut, single-cut and marquise-shaped diamonds, accented by triangle-cut emeralds, length 7 inches; circa 1930.

US\$ 20,000-30,000



103

Pair of Diamond Earstuds

Each set with a square emerald-cut diamond weighing 3.45 and 3.20 carats.

Accompanied by two GIA reports:

12116737 stating that the diamond weighing 3.45 carats is G color, VS1 clarity.

2185686367 stating that the diamond weighing 3.20 carats is G color, VS1 clarity.

US\$ 80,000-100,000





104

PROPERTY FROM A PRIVATE COLLECTION

Diamond Ring

Centering a round diamond weighing 3.71 carats, flanked by two tapered baguette diamonds, size 8³/₄.

Accompanied by GIA report no. 2155764362 stating that the diamond is D color, Internally Flawless.

US\$ 120,000-150,000



105

PROPERTY OF A PRIVATE COLLECTOR, CALIFORNIA

Emerald, Natural Pearl and Diamond Necklace

Centering an emerald bead measuring approximately 16.3 x 12.6 x 7.6 mm, accented by two natural pearls measuring approximately 7.7 and 7.5 mm, with bezel-set round and old European-cut diamonds, *length 16¼ inches.*

Accompanied by AGL report no. 1083951 stating that the emerald is of Colombian origin, clarity enhancement: minor, type: traditional.

Accompanied by GIA report no. 1186305379 stating that the pearls are natural, saltwater, with no indications of treatment.

US\$ 12,000-15,000



106

Carved Emerald and Diamond Bracelet

Of flexible design, set with 13 carved emerald leaves, accented by round and baguette diamonds, *length 7 inches; circa 1930.*

PROVENANCE

Property Formerly From the Collection of Matilda Dodge Wilson. Sotheby's New York, December 9, 2014, Magnificent Jewels, lot 163.

US\$ 35,000-55,000



107

PROPERTY FROM A HAWAIIAN FAMILY

Pair of Emerald and Diamond Earclips

Suspending two pear-shaped emeralds weighing 11.05 and 9.77 carats, topped by trapeze and single-cut diamonds, *one small diamond missing.*

Accompanied by AGL report. no. 1084364 A and B stating that the emeralds are of Colombian origin, clarity enhancement: minor, type: traditional.

US\$ 20,000-30,000



108

**Wood and Diamond Bangle, Sotheby's
Diamonds by James de Givenchy**

The rounded square-shaped ebony bangle-bracelet, embellished with 12 gold fish motifs each set with an oval-shaped diamond, *internal circumference 7½ inches, signed Sotheby's Diamonds by JdG, numbered BA2014.*

Potential bidders are advised that certain permits are required for export. If you are interested in this lot, please contact the Jewelry Department before bidding.

US\$ 15,000-20,000



109

PROPERTY FROM A FAMILY COLLECTION

Gold and Diamond Ring, JAR, Paris

Set with an emerald-cut diamond, the shank set with single-cut diamonds on both sides, gross weight approximately 14 dwts, *size 8½, signed JAR paris; circa 1996.* With signed box.

US\$ 10,000-15,000



110

PROPERTY OF A LADY

**Pair of Rose Gold and Diamond 'Catene'
Earclips, de Grisogono**

The tops supporting interlocking oval-shaped hoops, embellished with round diamonds, *signed de Grisogono Geneve, numbered B 85907, with maker's mark and Swiss assay mark.* With signed box. Fitted with retractable posts.

Accompanied by a Certificate of Authenticity from de Grisogono.

US\$ 9,000-12,000



111

Suite of Gold and Steel Jewelry, Bulgari

Composed of steel tubogas piping and gold geometric designs, *maximum necklace length 16 inches, bracelet length adjustable, all signed Bulgari, with Italian assay and registry marks, and French import mark.*

US\$ 10,000-15,000



112

PROPERTY FROM A PRIVATE COLLECTION, NEW YORK

Gold and Sapphire Minaudière, Gucci

The reeded gold case comprising multiple compartments including one for powder, one with a bakelite comb, a mirror, and a lipstick holder, with a baguette sapphire thumbpiece, one terminal set with a cluster of single-cut sapphires, engraved 'March 21, 1965', 'F.O.W.W.A.L.Y. George', gross weight approximately 298 dwts, *signed Gucci, with Italian registry mark, one small sapphire missing; circa 1965.*

US\$ 10,000-15,000



113

PROPERTY FROM A COLORADO COLLECTION

Diamond 'Roadster' Wristwatch, Cartier

The tonneau-shaped case embellished with round diamonds and a pavé-set diamond crown, with a silvered dial, black Roman numeral indicators, and a magnified date aperture, on a stainless steel bracelet, quartz movement, *internal circumference 5¾ inches, signed Cartier, Roadster, numbered 76081CE and 2723, with Swiss assay and maker's marks, together with an additional light blue leather strap. With signed box.*

US\$ 7,500-10,000









114

PROPERTY OF A PRIVATE COLLECTOR

Gem-Set and Diamond Brooch, France

Designed as a series of columns with floral decoration, set with baguette and single-cut diamonds, accented by carved jade, cabochon rubies, marquise-shaped emeralds and black enamel, with French assay and workshop marks.

US\$ 10,000-15,000



115

PROPERTY FROM A MIDWEST COLLECTION

Diamond Ring

Set with three old European-cut diamonds, accented by single and old European-cut diamonds, size 5 1/4; circa 1930.

US\$ 18,000-22,000



116

Diamond and Onyx Bracelet

The highly flexible strap set with numerous old European-cut diamonds, decorated with two rows of calibre-cut onyx, length 6 3/4 inches; circa 1920.

US\$ 15,000-20,000

117

Diamond and Onyx Wristwatch, Tiffany & Co.

The rectangular dial applied with Arabic numeral indicators, the bezel set with onyx and single-cut diamonds, the bracelet set with old European-cut diamonds spaced by onyx links, manual movement, *length 6¾ inches, the dial signed Tiffany & Co., with French assay mark; circa 1930.*

US\$ 10,000-15,000



118

Enamel and Diamond Vanity Case, Cartier, France

The hinged rectangular case applied with black enamel, the clasp millegrain-set with rose-cut diamonds, the interior fitted with a mirror, two compartments and a lipstick holder, *signed Cartier, partially numbered 312, with French assay and maker's marks.*

US\$ 5,000-7,000



119

Ruby and Diamond Ring

Set with an oval-shaped ruby weighing 2.82 carats, flanked by two oval-shaped diamonds and tapered baguette diamonds, size 6¼.

Accompanied by AGL report no. 1085062 stating that the ruby is of Thai origin, with no indications of heating.

US\$ 6,000-8,000





120

PROPERTY OF A PRIVATE COLLECTOR

Ruby and Diamond Necklace

Set with round diamonds, the front highlighted by floret motifs set with oval-shaped rubies, *length 16¾ inches.*

US\$ 7,000-9,000



121

PROPERTY OF A PRIVATE COLLECTOR, CALIFORNIA

Ruby and Diamond Clip-Brooch, Van Cleef & Arpels

Of spray design, set with old European, round and single-cut diamonds, accented by round rubies, *signed V.C.A., numbered NY 31418.*

US\$ 15,000-20,000



122

PROPERTY OF A PRIVATE COLLECTOR, SAN DIEGO

Fancy Yellow Diamond and Diamond Ring

Centering a round Fancy Yellow diamond weighing 6.30 carats, within a double hexagonal surround accented with round near colorless diamonds, size 5.

Accompanied by GIA report no. 2175297299 stating that the diamond is Fancy Yellow, Natural Color, SI2 clarity.

US\$ 30,000-50,000

123

Ruby and Diamond Bracelet, Oscar Heyman & Brothers

Composed of arches of alternating calibr -cut rubies and round diamonds, accented by square-cut diamonds, length 7 inches, numbered 27318; circa 1937.

Accompanied by certificate from Oscar Heyman & Brothers stating that the bracelet was manufactured by Oscar Heyman & Brothers, circa March 1937.

US\$ 18,000-22,000



124

Pair of Diamond Clip-Brooches, Van Cleef & Arpels, France

Designed as leaves, set with numerous round diamonds, signed VCA, numbered M 41547 and M 41955, with French assay and maker's marks.

US\$ 10,000-15,000



125

Ruby and Diamond Ring

Centering an oval-shaped ruby weighing 3.55 carats, the ballerina mounting set with tapered baguette diamonds, size 5½, numbered 162879.

Accompanied by AGL report no. 1085372 stating that the ruby is of Burmese origin, with no indications of heating.

US\$ 20,000-30,000



126

Pair of Colored Diamond and Diamond Earclips

Designed as floral clusters, the flowers centered by round diamonds of yellow hue, the petals set with pear-shaped near colorless diamonds.

Please note that the diamonds have not been tested for natural origin of color.

US\$ 10,000-15,000



127

Diamond Bracelet, Tiffany & Co.

Composed of three rows of cushion-cut, marquise-shaped and round diamonds, *length 6 $\frac{7}{8}$ inches, signed Tiffany & Co., numbered 27681417.*

US\$ 30,000-50,000



128

Fancy Intense Yellow Diamond and Diamond Ring

Centering a cut-cornered square step-cut Fancy Intense Yellow diamond weighing 6.04 carats, flanked by tapered baguette diamonds, size 6½.

Accompanied by GIA report no. 2173459131 stating that the diamond is Fancy Intense Yellow, Natural Color, Internally Flawless.

US\$ 110,000-130,000





□ 129

PROPERTY FROM AN ESTATE, CALIFORNIA

**Gold and Ruby Bracelet, Boucheron,
France**

Composed of interwoven textured and polished gold, the front set with round rubies and completed by a gold tassel, gross weight approximately 69 dwts, *length 6¾ inches, signed Boucheron, with French assay and partial workshop marks.*

US\$ 4,000-6,000



130

PROPERTY FROM AN ESTATE, CALIFORNIA

**Pair of Ruby and Diamond Pendant-
Earclips**

The tops and detachable pendants set with cabochon rubies, accented by round and pear-shaped diamonds.

US\$ 8,000-12,000



131

PROPERTY FROM AN ESTATE, CALIFORNIA

**Gold, Ruby and Diamond Bracelet,
Gübelin**

Of woven design, set with round diamonds accented by round and step-cut rubies, *length 7½ inches, signed Gübelin, numbered 40C-9220-06, with maker's mark.*

US\$ 6,000-8,000

□ 132

PROPERTY FROM AN ESTATE, CALIFORNIA

Cultured Pearl, Ruby, Citrine and Diamond Choker

Composed of four strands of cultured pearls measuring approximately 7.3 mm, centering a plaque of floral design set with two round citrines, accented by variously-cut diamonds and calibr -cut rubies, *length 16½ inches*.

US\$ 3,000-5,000



□ 133

PROPERTY FROM AN ESTATE, CALIFORNIA

Diamond Brooch

Designed as a floral bouquet, set with round diamonds, accented by gold boules, gross weight approximately 36 dwts.

US\$ 3,000-5,000



134

PROPERTY FROM AN ESTATE, CALIFORNIA

Gold, Diamond and Ruby Bracelet, Cartier

Set at intervals with alternating crescents of round diamonds and rubies, *length 8 inches*, signed Cartier, numbered N1164 N2723, with British hallmarks; circa 1965. With signed and fitted box.

US\$ 5,000-7,000





135

PROPERTY FROM AN ESTATE, CALIFORNIA

Gold and Diamond 'Mirage' Necklace, Feyhan Mutlu

Composed of tapered square links, gradually opening wider to reveal pavé-set round diamonds and arches set with square-cut diamonds, *length 15½ inches, signed Feyhan; circa 1992.*

Viennese born and raised in Turkey, Feyhan Mutlu studied art and jewelry in Nice and Paris. Her unique and captivating designs led to her work being utilized by distinguished firms such as Helena Rubinstein and De Beers. She was also recognized in many international competitions. This 'Mirage' necklace, so named due to its reflective illusion of diamond fields, won the Diamonds International Award in 1992. The Diamonds International Contest focuses on the importance of diamonds in jewelry design and is one of the most prestigious competitions in the business.

US\$ 15,000-20,000



□ 136

PROPERTY FROM AN ESTATE, CALIFORNIA

Diamond and Onyx Ring

The center set with round diamonds, framed by a surround of carved onyx and round diamonds, size *5¼, numbered NY 45406.1, partially inscribed Made in France, with French export and indistinct maker's mark for Van Cleef & Arpels.*

US\$ 4,000-6,000



137

PROPERTY FROM AN ESTATE, CALIFORNIA

Diamond and Colored Diamond Bracelet- Clip Combination

The pair of floral clips set with round diamonds of near colorless and yellow hue, *with French assay and partial workshop mark; together with a hinged bangle fitting applied with black lacquer, internal circumference 6¼ inches.*

Please note the diamonds of yellow hue have not been tested for natural origin of color.

US\$ 5,000-7,000

138

PROPERTY FROM AN ESTATE, CALIFORNIA

Suite of Turquoise and Diamond Jewelry

Comprising a necklace, earclips, brooch and ring; the necklace composed of graduated turquoise cabochons alternating with x-shaped motifs set with round diamonds, *length 15¾ inches, signed Verdura*; the earclips suspending a pear-shaped cabochon turquoise drop, the tops set with a turquoise cabochon and round diamonds, *signed Verdura*; the brooch suspending a pear-shaped cabochon turquoise drop, the bow-shaped top set with round diamonds; the ring set with an oval-shaped turquoise cabochon, within a surround of round diamonds, *size 6¾*.

US\$ 12,000-15,000



139

PROPERTY FROM AN ESTATE, CALIFORNIA

Turquoise and Diamond Bracelet and Pair of Turquoise, Ruby and Diamond Pendant-Earclips

The bracelet composed of two rows of turquoise cabochons, accented by round diamonds, centering a scrolling cluster of turquoise cabochons and round, baguette and marquise-shaped diamonds, *length 6¾ inches, one turquoise cabochon missing*; the earclips composed of trefoil tops set with turquoise cabochons embellished with round rubies and diamonds, the drops similarly set.

US\$ 7,000-9,000



140

PROPERTY FROM AN ESTATE, CALIFORNIA

Ruby and Diamond Brooch

Designed as a strawberry, set with marquise-shaped rubies and baguette diamonds, *several diamonds missing*.

US\$ 5,000-7,000





141

PROPERTY FROM AN ESTATE, CALIFORNIA

Seed Pearl and Diamond Choker

Composed of twelve strands of seed pearls measuring approximately 3.0 to 2.5 mm, the front accented with a scrollwork motif set with old European-cut diamonds, with similarly set bar elements, *length 17 inches, with detachable 3¼ inch segment.*

Please note that the pearls have not been tested for natural origin of color.

US\$ 6,000-8,000



142

PROPERTY FROM AN ESTATE, CALIFORNIA

Gold, Amethyst, Diamond and Ruby Bangle-Bracelet

Of hinged design, centering two snake heads accented by round diamonds and rubies surrounding a cushion-cut amethyst, *internal circumference 5½ inches.*

US\$ 5,000-7,000

143

PROPERTY FROM AN ESTATE, CALIFORNIA

Star Sapphire and Diamond Clip-Brooch and Pendant-Necklace Combination

The brooch of floral design, set with a star sapphire weighing 219.81 carats surrounded by petals set with numerous round diamonds, suspended from a tubogas chain accented with round diamonds, *length 18 inches*.

Accompanied by AGL report no. 1086552 stating that the star sapphire is natural, of Ceylon origin, with no indications of heating, strength of star: moderate, quality of star: good.

US\$ 20,000-30,000



144

PROPERTY FROM AN ESTATE, CALIFORNIA

Diamond Tiara

Decorated with swag motifs, set with numerous old European-cut diamonds; *circa 1910*.

US\$ 6,000-8,000





145

PROPERTY FROM AN ESTATE, CALIFORNIA

Ruby and Diamond Necklace

Composed of fancy-shaped links set with cabochon rubies and old European-cut diamonds, accompanied by a white gold chain of later addition, *length 18½ inches, the front signed Seaman Schepps.*

US\$ 10,000-15,000

□ 146

PROPERTY FROM AN ESTATE, CALIFORNIA

Diamond and Ruby Double-Clip Brooch

Of scroll design, the clip set with carved and calibr -cut rubies, accented by round and baguette diamonds, *fitted with later added pendant hooks; circa 1930.*

US\$ 3,000-5,000



147

PROPERTY FROM AN ESTATE, CALIFORNIA

Sapphire and Diamond Bracelet

Set at the center with a cushion-cut sapphire weighing 4.12 carats, within a frame of baguette diamonds, completed by two tapered segments of pear-shaped sapphires and baguette diamonds, *length 6¼ inches.*

Accompanied by AGL report no. 1085063 stating that the sapphire is of Burmese origin, with no indications of heating.

US\$ 10,000-15,000



148

PROPERTY FROM AN ESTATE, CALIFORNIA

Emerald and Diamond Pendant-Necklace

Of ribbon design, set with round and baguette diamonds, accented by round emeralds, *length 18³/₈ inches; pendant detachable for wear as a clip.*

US\$ 6,000-8,000



149

PROPERTY FROM AN ESTATE, CALIFORNIA

Diamond Bracelet

Composed of navette-shaped links set with round and marquise-shaped diamonds, accented by baguette diamonds, *length 7⁷/₈ inches.*

US\$ 5,000-7,000



150

PROPERTY FROM AN ESTATE, CALIFORNIA

Ruby and Diamond Bracelet-Brooch Combination

The pair of scrollwork clips decorated with pear-shaped rubies and baguette, old European and single-cut diamonds, fitted to the front of a hinged bangle accented with old European and single-cut diamonds, together with a carrier for wear as a double clip-brooch; *circa 1950s.*

US\$ 8,000-12,000





151

PROPERTY FROM AN ESTATE, CALIFORNIA

Diamond Necklace

Of textured gold ropework design, the front of the necklace embellished with pavé-set round diamonds, gross weight approximately 124 dwts, length 17 inches.

US\$ 6,000-8,000



152

PROPERTY FROM AN ESTATE, CALIFORNIA

Cultured Pearl and Diamond Ring, David Webb

The textured gold mounting set with two baroque cultured pearls of white hue measuring approximately 17.0 by 13.0 mm and 13.2 by 12.5 mm, a baroque cultured pearl of gray hue measuring 15.5 by 15.0 mm, a triangular-cut diamond, and round diamonds, size 7½, signed Webb.

Please note the pearls have not been tested for natural origin of color.

US\$ 6,000-8,000



□ 153

PROPERTY FROM AN ESTATE, CALIFORNIA

Pair of Gold and Diamond Earclips and Brooch

Each earclip composed of flexible gold fringe terminating in gold boules, set with round diamonds; the brooch of similar design, with maker's mark.

US\$ 3,000-5,000

154

PROPERTY FROM AN ESTATE, CALIFORNIA

Gold and Diamond 'Cheveux d'Ange' Necklace, Van Cleef & Arpels, France

The gold links of chevron design gathered at the side in a bow set with round diamonds, gross weight approximately 61 dwts, length 18 inches, signed Van Cleef & Arpels, made in France, numbered 34335, with partial French workshop marks; circa 1960.

US\$ 10,000-15,000



155

PROPERTY FROM AN ESTATE, CALIFORNIA

Multi-Colored Sapphire and Diamond Bangle-Bracelet

Designed as a floral cluster of cushion, oval and marquise-shaped sapphires of various blue and yellow hues, accented by round diamonds, on a textured gold hinged bangle, gross weight approximately 82 dwts, internal circumference 6 inches.

US\$ 8,000-12,000



156

PROPERTY FROM AN ESTATE, CALIFORNIA

Gold and Diamond Purse, Van Cleef & Arpels, and Two-Color Gold Clutch

The purse of woven design, composed of gold mesh and a chain, the front closure embellished with round diamonds, opening to reveal a mirror, gross weight approximately 138 dwts, signed Van Cleef et Arpels, numbered 70216 and 2950, with French assay and workshop marks; the clutch of similar design, composed of two-color gold, gross weight approximately 64 dwts, with Italian registry mark.

US\$ 6,000-8,000



157

PROPERTY FROM AN ESTATE, CALIFORNIA

Diamond 'Reflections' Bracelet Clip-Brooch Combination, Trabert & Hoeffler-Mauboussin

The clip-brooch of scrollwork design, set with round, single, baguette and marquise-shaped diamonds, with a detachable bracelet accented with single-cut diamonds, *internal circumference 6½ inches, the bracelet signed Trabert & Hoeffler Mauboussin and inscribed "expressly designed for Mrs. William Berchtold", one diamond missing.*

US\$ 7,000-9,000



158

PROPERTY FROM AN ESTATE, CALIFORNIA

Pair of Diamond and Ruby 'Reflections' Clip-Brooches, Trabert & Hoeffler - Mauboussin

Of scrollwork design, each centering an old European-cut diamond accented by cabochon rubies, further set with old European, single-cut and baguette diamonds, *the carrier signed Trabert & Hoeffler Mauboussin.*

US\$ 15,000-20,000



PROPERTY OF A PRIVATE COLLECTOR,
PROVIDENCE, RHODE ISLAND

Sapphire and Diamond Ring

Centering an oval-shaped mixed-cut sapphire measuring approximately 8.40 by 7.70 by 6.75 mm, flanked by round diamonds, size 5¼.

Accompanied by AGL report no. 1080995 stating that the sapphire is of Classic Kashmir origin, with no indications of heating.

US\$ 60,000-80,000

End of Session One





THIS PAGE
LOTS 68 & 69

SESSION TWO

NEW YORK
TUESDAY
17 OCTOBER 2017
2PM

LOTS 160-310

Please note these lots are
not shown in actual size





160

PROPERTY FROM A PRIVATE AMERICAN
COLLECTION

Gold, Diamond and Ruby Necklace, Bulgari

The gold curb link chain centering a shield-shaped ruby framed by baguette diamonds, suspending a shield-shaped diamond similarly framed, length 14½ inches, signed Bulgari NY, numbered C724, with maker's mark.

US\$ 18,000-22,000



161

PROPERTY FROM A PRIVATE AMERICAN
COLLECTION

Coin and Diamond Brooch, Bulgari

Centering a gold Edward VI coin, within a fancy-shaped surround set with round diamonds, gross weight approximately 30 dwts, signed Bulgari, numbered BV 166.

US\$ 6,000-8,000



162

PROPERTY FROM A PRIVATE AMERICAN
COLLECTION

Diamond Bracelet

Of hinged design, the cuff set with numerous round diamonds, bordered by polished gold, internal circumference 6¼ inches.

US\$ 5,000-7,000

163

PROPERTY FROM A PRIVATE AMERICAN
COLLECTION

**Three Cultured Pearl, Colored Stone,
Diamond, and Enamel Necklaces**

Comprising three necklaces, each composed of cultured pearls set with emerald, ruby, and sapphire beads, accented with rondelles applied with black enamel and round diamonds, *lengths 35¾, 33¾ and 32 inches.*

US\$ 15,000-20,000



164

PROPERTY FROM A PRIVATE AMERICAN
COLLECTION

**Cultured Pearl, Diamond, Enamel and
Gem-Set Bangle-Bracelet and Pair of
Earclips, David Webb**

The bracelet designed as opposing snakes, the scales applied with white enamel on textured gold, each snake head set with a cultured pearl, accented with round diamonds and cabochon ruby eyes, *internal circumference 5½ inches, signed Webb*; the earclips centering cultured pearls, within a round diamond surround, the frames similarly applied with white enamel scales, *signed Webb.*

Please note the pearls have not been tested for natural origin of color.

US\$ 25,000-35,000



165

PROPERTY FROM A PRIVATE AMERICAN
COLLECTION

**Pair of Enamel and Diamond Earclips,
David Webb**

Of geometric design applied with white enamel, highlighted with round diamonds, *signed Webb.*

US\$ 5,000-7,000





166

PROPERTY OF A PRIVATE COLLECTOR

Suite of Turquoise, Diamond and Cultured Pearl Jewelry, Meister

Comprising: a necklace composed of three strands of turquoise beads, set at intervals with cultured pearls and single-cut diamond rondelles, completed by a clasp set with turquoise cabochons and round diamonds, *internal circumference 15 inches, signed EM*; a bracelet set with clusters of turquoise cabochons and round diamonds, *length 7 inches, signed Meister*; and a pair of matching earclips, *signed EM*.

US\$ 20,000-30,000



167

Diamond and Mother-of-Pearl 'Cape Cod' Wristwatch, Hermès, Paris

Composed of a rectangular mother-of-pearl dial with Arabic numeral indicators, the bezel and bracelet lined by round diamonds, quartz movement, *internal circumference 6 inches, with two extra links, the dial and bracelet signed Hermès, Paris, the caseback numbered 1284012, the bracelet numbered 4606, with French assay mark.*

Please note this lot is restricted to US only buyers due to endangered species materials.

⦿ **US\$ 6,000-8,000**

168

Pair of Amethyst, Rock Crystal and Diamond Earclips, David Webb

Set with amethyst cabochons, framed by round diamonds, on fluted rock crystal bases, *signed Webb*.

US\$ 5,000-7,000



169

PROPERTY OF A LADY, NEW YORK, NEW YORK

Amethyst and Diamond Ring, Van Cleef & Arpels

Centering an oval-shaped amethyst cabochon, framed by round diamonds, accented by round amethysts, *size 6½, signed Van Cleef & Arpels, numbered NY 44886; circa 1974.*

US\$ 6,000-8,000



170

Pair of Diamond Earstuds

Centering two round diamonds weighing 1.51 carats each, framed by smaller round diamonds.

Accompanied by two GIA reports:

No. 2155437774 stating that one of the 1.51 carat diamonds is E color, SI1 clarity.

No. 1166276154 stating that one of the 1.51 carat diamonds is E color, SI2 clarity, with Excellent Cut, Polish and Symmetry.

US\$ 15,000-20,000





171

Pair of Amethyst and Diamond Earrings

The tops set with numerous round diamonds of light brown hue suspending drops set with numerous rose-cut amethysts. Fitted with posts.

Please note that the diamonds of light brown hue have not been tested for natural origin of color.

US\$ 6,000-8,000



172

Diamond Band Ring

The band set with 17 cut-cornered modified square-cut diamonds, size 6½.

US\$ 15,000-20,000



173

Diamond and Yellow Sapphire Ring, David Webb

Of crossover design, set with a round diamond weighing 2.00 carats and a round yellow sapphire, embellished with numerous round diamonds, size 9¼, signed Webb, numbered HA9. With signed box.

Accompanied by GIA report no. 2185353260 stating that the diamond is G color, VS2 clarity.

Accompanied by a Certificate of Authenticity from David Webb.

US\$ 12,000-15,000

174

PROPERTY OF A LADY

Diamond Necklace

Designed as a multi-strand choker centering heart-shaped motifs, set with round, pear, marquise and oval-shaped diamonds, *length 11¾ inches.*

US\$ 10,000-15,000



175

Pair of Tourmaline and Diamond Earrings

Suspending two tourmaline briolette drops, the tops set with round and baguette diamonds.

US\$ 9,000-12,000



176

Diamond Bracelet-Watch, Van Cleef & Arpels

Designed as a stylized buckle, set with round diamonds, highlighted by tapered baguette and baguette diamonds, opening to reveal a rectangular dial with baton and Arabic numeral indicators, *the dial and caseback signed Van Cleef & Arpels, the caseback numbered 69.051, length 6½ inches, partially numbered 18, with French assay mark.* With signed pouch.

US\$ 35,000-45,000





PROPERTY FROM THE ESTATE OF CHARLOTTE GARSON, ATLANTA, GEORGIA

LOTS 177-197

and Mobile. Tall, graceful and imposing even in her twenties, Charlotte soon charmed the initially reticent Southern society ladies, who viewed most Northerners with suspicion if not downright distrust.

Charlotte's most fulfilling role was that of de facto business partner to her husband, Dan. She was unstinting in her support and encouragement of his role as President and then Chairman of the Board of the Lovable Company, a family business begun by Dan's father in the 1920s. As his companion on multiple lengthy business trips around the world each year from the 1950s through the 1990s, Charlotte split her time between her role as unflagging hostess, confidante, advisor and advocate for Dan and exploring the treasures of Europe, the Middle East, South Africa and Asia.

Charlotte's daughter, Lynn, accompanied her parents on one of these trips, and recalls vividly: "My mother had made a morning appointment at Van Cleef & Arpels in the Place Vendome in Paris. We entered and were immediately whisked to the inner sanctum to meet with M. Pierre Arpels, a courtly gentleman of middle-age and salt and pepper hair. My mother explained that she wanted several pieces of important jewelry consisting of emeralds and diamonds. After much conversation over a glass of champagne, I could see that my mother particularly liked an emerald and diamond bracelet (Lot 177) and a lion pendent encrusted with diamonds (Lot 178). Her eyes sparkled when she laid her eyes on these pieces, and they became some of the most admired pieces in her collection."

The jewels from the collection of Charlotte Garson reflect a woman with timeless, elegant taste. Bold designs by David Webb and Bulgari alongside iconic designs such as the VCA 'Snowflake' are indicative of a woman who not only had style, but also understood the breadth and depth of jewelry throughout her various stages of collecting.

"The end of an era." That was the constant refrain after Charlotte Garson died, from the valets to the maître d's to her children to the staff at Van Cleef & Arpels, David Webb, and all of the other high end retailers she had frequented and whose luxury goods she collected over seventy years. Anyone who knew her agreed that she had an exceptional eye and was a great connoisseur of many things – jewelry, fashion, food, wine, antiques and art chief among them. Jewelry and art, however, were at the apex of her passions, as attested by the bond she forged with directors of the High Museum of Atlanta throughout her years as both board member and collector. Gifted with a keen intellect, her advice was much sought after and often followed.

Growing up on Central Park West in the San Remo apartments, Charlotte was no stranger to gracious living from a young age. When she married a beguiling young soldier named Dan Garson from Atlanta and moved with him to his home town in 1945, her initial reaction was culture shock. Nevertheless, she quickly adapted and became a fixture in all aspects of the social scene, including the hunt club, parties and road trips on the football circuit to neighboring towns such as Birmingham

177

PROPERTY FROM THE ESTATE OF CHARLOTTE
GARSON, ATLANTA, GEORGIA

**Diamond and Emerald Bracelet, Van
Cleef & Arpels, France**

Composed of scalloped lozenge-shaped links
set with numerous round diamonds, topped and
accented with round and oval-shaped cabochon
emeralds, *length 6¼ inches, signed Van Cleef &
Arpels, numbered 10689 CS, with French assay
and maker's marks; circa 1970s.*

US\$ 25,000-35,000



178

PROPERTY FROM THE ESTATE OF CHARLOTTE
GARSON, ATLANTA, GEORGIA

**Diamond and Emerald Brooch,
Van Cleef & Arpels, France**

The lion's head set with round diamonds and
pear-shaped emerald eyes, *signed Van Cleef &
Arpels, numbered 26552, with French assay and
maker's mark.*

US\$ 12,000-15,000



179

PROPERTY FROM THE ESTATE OF CHARLOTTE
GARSON, ATLANTA, GEORGIA

**Pair of Emerald and Diamond Earclips,
Van Cleef & Arpels, France**

Of floral design, set with round emeralds and
diamonds, *signed Van Cleef & Arpels, numbered
CS 10698, with French assay and maker's marks.*

US\$ 8,000-12,000





180

PROPERTY FROM THE ESTATE OF CHARLOTTE GARSON, ATLANTA, GEORGIA

Gold and Malachite Necklace

Composed of malachite beads alternating with gold links embellished with a ropework texture, gross weight approximately 123 dwts, length 17 $\frac{1}{4}$ inches, with Italian assay and registry marks.

US\$ 8,000-12,000



181

PROPERTY FROM THE ESTATE OF CHARLOTTE GARSON, ATLANTA, GEORGIA

Coral, Emerald and Diamond 'Ibex' Clip-Brooch, David Webb

The spherical carved coral ibex embellished with round emeralds and diamonds, and a marquise-shaped diamond eye, signed David Webb, two diamonds missing.

Please note this lot is restricted to US only buyers due to endangered species materials.

⦿ **US\$ 10,000-15,000**



182

PROPERTY FROM THE ESTATE OF CHARLOTTE GARSON, ATLANTA, GEORGIA

Pair of Coral and Diamond Earclips, David Webb

Composed of two fluted carved coral half-hoops, lined with round diamonds, signed Webb.

Please note this lot is restricted to US only buyers due to endangered species materials.

⦿ **US\$ 6,000-8,000**

183

PROPERTY FROM THE ESTATE OF CHARLOTTE
GARSON, ATLANTA, GEORGIA

**Diamond, Enamel and Emerald Brooch,
David Webb**

Designed as a tiger with an articulated tail,
embellished with stripes of round diamonds
and black enamel, further set with pear-shaped
emerald eyes, *signed Webb*.

US\$ 10,000-15,000



184

PROPERTY FROM THE ESTATE OF CHARLOTTE
GARSON, ATLANTA, GEORGIA

Coral and Diamond Ring, David Webb

Of bombé design, set with a piece of fluted coral
within a mount ornamented with black lacquer,
set with round and single-cut diamonds, size 5,
signed Webb.

*Please note this lot is restricted to US only buyers
due to endangered species materials.*

● **US\$ 6,000-8,000**



185

PROPERTY FROM THE ESTATE OF CHARLOTTE
GARSON, ATLANTA, GEORGIA

**Pair of Cultured Pearl, Diamond and
Enamel Earclips, David Webb**

The oval-shaped designs set with two cultured
pearls measuring approximately 12.8 and 12.7
mm, surrounded by pavé-set round diamonds
and framed by black enamel, *signed Webb*.

US\$ 6,000-8,000





186

PROPERTY FROM THE ESTATE OF CHARLOTTE GARSON, ATLANTA, GEORGIA

Gold and Diamond Necklace and Bracelet, Van Cleef & Arpels, France

In tubogas style, composed of flexible gold links, embellished with a buckle motif set with round diamonds, total gross weight approximately 136 dwts, *necklace length 15 inches and bracelet length 6¾ inches, signed VCA, Made in France, numbered NY 58811 and NY 58812 respectively, with French assay and workshop marks.*

US\$ 8,000-12,000

187

PROPERTY FROM THE ESTATE OF CHARLOTTE GARSON, ATLANTA, GEORGIA

Diamond Ring and Jacket, the Jacket by David Webb

Set with an emerald-cut diamond weighing 4.09 carats, flanked by baguette diamonds, together with a gold ring jacket designed as overlapping leaves, size 5½, *jacket size 5¾ and signed David Webb.*

Accompanied by GIA report no. 5182505096 stating that the diamond is F color, VS1 clarity.

US\$ 45,000-55,000



188

PROPERTY FROM THE ESTATE OF CHARLOTTE GARSON, ATLANTA, GEORGIA

Pair of Gold and Diamond Earclips, David Webb

Of circular form, each accented with a crescent of round diamonds, embellished with fluted polished gold, *signed Webb.*

US\$ 5,000-7,000



189

PROPERTY FROM THE ESTATE OF CHARLOTTE GARSON, ATLANTA, GEORGIA

Pair of Diamond 'Snowflake' Pendant-Earclips, Van Cleef & Arpels

Composed of framed clusters of round diamonds, decorated with florets, *signed VCA, numbered NY 55196.*

US\$ 15,000-20,000



190

PROPERTY FROM THE ESTATE OF CHARLOTTE GARSON, ATLANTA, GEORGIA

Coral, Carved Emerald, Lapis Lazuli and Diamond Brooch, David Webb

Set with an oval-shaped coral cabochon flanked by carved emerald leaves, accented by lapis lazuli and round diamonds, *signed Webb.*

Please note this lot is restricted to US only buyers due to endangered species materials.

● **US\$ 6,000-8,000**



191

PROPERTY FROM THE ESTATE OF CHARLOTTE GARSON, ATLANTA, GEORGIA

Group of Signed Jewelry

Comprising: a ring set with an emerald-cut amethyst outlined with green enamel, *size 6, signed Webb*; a pair of textured gold earclips of doorknocker design, gross weight approximately 26 dwts, *signed VCA, numbered 3V572-5*; and a pair of hammered gold earclips of bombé design, gross weight approximately 28 dwts, *signed Webb.*

US\$ 7,000-9,000





192

PROPERTY FROM THE ESTATE OF CHARLOTTE GARSON,
ATLANTA, GEORGIA

**Gold and Carnelian Necklace,
David Webb**

Composed of eight fluted carnelian segments, capped and alternating with similarly designed gold links, gross weight approximately 208 dwts, length 35 inches, one segment measuring 8½ inches detaches for wear as a bracelet, signed Webb, numbered HA42.

Accompanied by a Certificate of Authenticity from David Webb.

US\$ 10,000-15,000

193

PROPERTY FROM THE ESTATE OF CHARLOTTE GARSON,
ATLANTA, GEORGIA

**Carnelian and Diamond Ring and a Pair of
Bangle-Bracelets, David Webb**

The ring composed of an oval-shaped carnelian cabochon, stacked over a carnelian plaque, framed by round diamonds within an architectural mount, together with a pair of bangle-bracelets each composed of four segments of carnelian anchored by gold ropework motifs, ring size 5½, signed Webb, internal circumference of bangles 6½ inches, signed Webb, numbered HA43 and HA45.

Accompanied by a Certificate of Authenticity from David Webb.

US\$ 10,000-15,000



194

PROPERTY FROM THE ESTATE OF CHARLOTTE GARSON,
ATLANTA, GEORGIA

**Pair of Hardstone and Diamond Earclips,
Bulgari, France**

Of hoop design, set with polished segments of onyx, coral, tiger's eye quartz, amethyst, malachite and lapis lazuli, embellished with round diamonds, signed Bulgari, with French workshop mark. With signed pouch.

Please note this lot is restricted to US only buyers due to endangered species materials.

● **US\$ 6,000-8,000**



195

PROPERTY FROM THE ESTATE OF CHARLOTTE GARSON, ATLANTA, GEORGIA

Pair of Tiger's Eye Quartz Earclips, Van Cleef & Arpels, France and Gold and Tiger's Eye Quartz Necklace

Comprising a pair of earclips composed of polished gold and tiger's eye quartz, together with a necklace composed of alternating tiger's eye quartz beads and textured gold openwork boules, *length 30 inches, the earclips signed VCA, numbered 3V600.7, with workshop marks.*

US\$ 10,000-15,000



196

PROPERTY FROM THE ESTATE OF CHARLOTTE GARSON, ATLANTA, GEORGIA

Gold and Diamond 'Fleur-de-Lys' Brooch, David Webb

Composed of hammered gold with ropetwist accents and a detachable band set with round diamonds, gross weight approximately 54 dwts, *signed Webb, numbered HA44.*

Accompanied by a Certificate of Authenticity from David Webb.

US\$ 8,000-12,000



197

PROPERTY FROM THE ESTATE OF CHARLOTTE GARSON, ATLANTA, GEORGIA

Citrine and Smoky Quartz 'Caged' Rings, Verdura

Of bombé design, each containing variously-cut citrines and smoky quartz, *sizes 5¾ and 6 respectively, signed Verdura, with maker's mark.*

The "Caged Ring" has been made by Verdura since 1941, when Fulco di Verdura created a rose gold and aquamarine version for New York socialite and American style icon Dorothy Paley Hirshon. Now in Verdura's museum collection, this original design has become a timeless favorite. The size and cuts of the stones are carefully selected to ensure they fit perfectly with enough room to flutter with delicate movements within the caged compartment.

US\$ 6,000-8,000









198

PROPERTY FROM A COLORADO COLLECTION

Group of Gold Jewelry, Tiffany & Co.

The necklace, bracelet and earrings composed of woven beaded rings, total gross weight approximately 88 dwts, *necklace length 15¼ inches, signed Tiffany & Co., bracelet length 7 inches, signed Tiffany & Co., the earrings signed T & Co.*

US\$ 5,000-7,000

199

PROPERTY OF A LADY

Turquoise and Diamond 'Rose de Noël' Brooch, Van Cleef & Arpels

Of floral design, composed of six turquoise petals, set with round diamonds, *signed Van Cleef & Arpels, numbered BL 105228, stamped with French assay mark. With signed box.*

US\$ 7,000-9,000



200

Pair of Gold and Diamond Earclips, Bulgari

The textured gold star-shaped designs set with round diamonds, *signed Bulgari.*

US\$ 4,000-6,000

201

PROPERTY OF A PRIVATE COLLECTION, SONOMA,
CALIFORNIA

Gold and Diamond Necklace and Earclips, Lagos

The necklace and earclips designed with *fleur-de-lys* motifs; the necklace with oval-shaped links, set with round diamonds, total gross weight approximately 77 dwts, *necklace length 18 inches*, *all pieces signed Lagos*. Earclips fitted with posts.

US\$ 4,000-6,000



202

Diamond Ring

Set with a pear-shaped diamond weighing 4.37 carats, accented by two tapered baguette diamonds, *size 7¼*.

Accompanied by GIA report no. 5181623890 stating that the diamond is H color, SI1 clarity.

US\$ 25,000-35,000



203

Gold and Diamond Bracelet, Van Cleef & Arpels, France

Composed of textured gold beads set at intervals with round diamonds, gross weight approximately 58 dwts, *length 7½ inches*, *signed V.C.A.*, *numbered 15631*, *with French assay and workshop marks*; *circa 1961*.

US\$ 6,000-8,000





204

PROPERTY OF A MIAMI COLLECTOR

Diamond Ring

Centering a bezel-set emerald-cut diamond weighing approximately 10.25 carats, size 7.

US\$ 60,000-80,000

205

PROPERTY OF A LADY

**Hematite, Chrysoprase, Cultured Pearl,
Sapphire and Diamond Necklace,
Cartier, France**

The hematite beads supporting a pendant of carved chrysoprase leaves, accented with a cabochon sapphire and round diamonds, with a cultured pearl tassel terminating in white gold boules, *length 19 inches, signed Cartier, numbered 9580001, with French assay and maker's marks. With signed box.*

US\$ 8,000-12,000



206

PROPERTY OF A GENTLEMAN

Emerald and Diamond Ring

The shank designed as a trapezoid shape, centering an emerald-cut emerald measuring approximately 7.8 x 7.1 x 5.3 mm, accented by four baguette diamonds, *size 6½.*

Accompanied by AGL report 1086100 stating that the emerald is of Zambian origin, clarity enhancement: minor, type: traditional.

US\$ 6,000-8,000



207

PROPERTY FROM AN ESTATE

**Pair of Cultured Pearl, Diamond and
Emerald Earclips, Tiffany & Co.**

Designed as frogs, centered on a gray and white cultured pearl each measuring approximately 12.0 mm, accented by round diamonds, with cabochon emerald eyes, *signed Tiffany & Co.; circa 1996.*

Please note that the gray pearl has not been tested for natural origin of color.

US\$ 5,000-7,000



208

PROPERTY OF A LADY

**Diamond, White Sapphire, White Zircon
and Cultured Pearl Tiara**

Of openwork floral design, set with round, pear and marquise-shaped diamonds, with round white sapphires and variously-cut zircons, accented by 110 cultured pearls measuring approximately 17.0 to 3.8 mm.

US\$ 15,000-20,000



209

PROPERTY OF A LADY

Spinel and Diamond Ring

Set with a cushion-cut spinel weighing 12.04 carats, the mounting set with single-cut diamonds, size 5³/₄, signed M for Martin Katz, numbered 4950.

Accompanied by AGL report no. 1083317 stating that the spinel is natural, of Classic Burmese origin, with no indications of clarity enhancement.

US\$ 15,000-20,000



210

PROPERTY OF AN IMPORTANT PRIVATE COLLECTOR

Diamond Clip-Brooch

Of floral design, the center set with a round diamond, the petals pavé-set with smaller round diamonds, one diamond missing.

US\$ 8,000-12,000



211

Diamond Necklace

Of floral design set with numerous round diamonds, length 16¾ inches.

US\$ 35,000-45,000



212

PROPERTY FORMERLY FROM THE COLLECTION OF
MAUREEN O'HARA

Pair of Emerald and Diamond Earrings

The tops designed as scroll motifs set with round diamonds, suspending two pear-shaped emeralds measuring approximately 22.7 x 12.1 x 8.1 and 22.5 x 12.9 x 8.4 mm, framed by numerous round diamonds; circa 1950.

PROVENANCE

Sotheby's New York, February 4, 2009, *Important Jewels*, lot 204.

US\$ 10,000-15,000





213

PROPERTY OF A PRIVATE COLLECTOR

**Group of Three Colored Stone and
Diamond Bangle-Bracelets**

Set with calibr -cut rubies, sapphires and emeralds, accented by square-cut and trapeze-cut diamonds, total gross weight approximately 77 dwts, *internal circumference 6³/₄ inches.*

US\$ 20,000-30,000



214

PROPERTY FROM A PRIVATE COLLECTION

**Ruby and Diamond Clip-Brooch, Oscar
Heyman & Brothers**

Of floral design, the center set with oval-shaped rubies, the petals with round diamonds, *numbered 72909, with maker's mark.*

US\$ 8,000-12,000



215

**Pair of Ruby and Diamond Cufflinks,
Assil**

Each button-shaped dome set with numerous round diamonds, accented by round ruby cabochons, *signed Assil.*

US\$ 6,000-8,000

216

Pair of Diamond 'Taj Mahal' Earclips,
Cartier

Designed as a line of round diamonds suspending pear-shaped pendants set with round diamonds, with a reverse-set diamond on each base, *signed Cartier, numbered 618405, with French assay and maker's marks.* Fitted with posts.

US\$ 25,000-35,000



217

Diamond 'Divan Diagonale' Wristwatch,
Cartier

The rectangular dial set on a diagonal, with Roman numeral indicators, framed by round diamonds, completed by a black strap and a diamond-set clasp, quartz movement, *length adjustable, the dial, caseback and bracelet signed Cartier, the caseback numbered 2779 and 21607CE, with Swiss assay and maker's marks.*

US\$ 10,000-15,000



218

PROPERTY FROM A PRIVATE COLLECTION

Pair of Diamond and Enamel Earclips,
David Webb

The pavé-set centers within a black enamel border, within an articulated surround of similar design, *signed Webb.*

US\$ 6,000-8,000





219

PROPERTY FROM A PRIVATE COLLECTION, NEW YORK

**Suite of Cultured Pearl and Diamond Jewelry,
Sterlé, Paris**

Comprising: a two strand necklace composed of gray cultured pearls measuring approximately 9.3 to 8.7 mm, on a sculptural gold clasp accented with round and baguette diamonds, *length 16 inches*; a pendant-brooch of matching design to the necklace clasp, *two diamonds missing*; and a pair of earclips *en suite*; signed Sterlé, Paris, numbered 1.711, 1.650 and 6.191 respectively, with French assay and maker's marks.

Please note that the pearls have not been tested for natural origin of color.

US\$ 18,000-22,000

220

PROPERTY OF AN IMPORTANT PRIVATE COLLECTOR

Pair of Cultured Pearl and Diamond Bracelets

Each set with 8 gray baroque cultured pearls measuring approximately 13.8 x 12.2 x 12.0 mm, spaced by half barrel-shaped motifs pavé-set with round diamonds, *length 6¼ and 6¾ inches*.

Please note that the pearls have not been tested for natural origin of color.

US\$ 8,000-12,000

221

PROPERTY FROM A PRIVATE COLLECTION, SONOMA, CALIFORNIA

**Citrine, Rock Crystal, Cultured Pearl, Diamond
and Mother-of-Pearl Brooch and Earrings,
Elizabeth Gage**

The brooch set with an oval-shaped citrine intaglio depicting Europa and the Bull, accented by an oval-shaped rock crystal reverse intaglio depicting two winged putti in a celestial setting, the reverse applied with mother-of-pearl, signed Gage, with English hallmarks; the earrings of floral design, centering two rock crystal reverse intaglios depicting snowflakes, signed Gage; total gross weight approximately 46 dwts. With signed box.

Please note this lot is restricted to US only buyers due to endangered species materials.



222

PROPERTY FROM A PRIVATE COLLECTION

Cultured Pearl and Diamond Pendant-Necklace, Mikimoto

Composed of three rows of cultured pearls measuring approximately 7.4 to 7.0 mm, the front accented with a flower set with round diamonds and a cultured pearl measuring approximately 13.1 mm, suspending a detachable cultured pearl measuring approximately 14.8 mm, surmounted by a pear-shaped diamond, *internal circumference 17¼ inches, signed Mikimoto.*

Please note that the pearls have not been tested for natural origin of color.

US\$ 15,000-20,000



223

PROPERTY OF A LADY, NEW YORK, NEW YORK

Gold, Diamond and Sapphire 'Happy Diamonds' Wristwatch, Chopard

Composed of a heart-shaped dial framed by round diamonds, featuring free-floating collet-set diamonds between synthetic sapphire crystals, the lugs set with cabochon sapphires, quartz movement, *internal circumference 6 inches, the dial signed Chopard Genève, the caseback and buckle signed Chopard, numbered 20/6772-23, 493558 and 550 1, with Swiss assay mark.* With signed box.

US\$ 8,000-12,000



△ 224

Freshwater Cultured Pearl, Colored Stone and Diamond 'Ollie' Brooch, Geoff Rowlandson

Designed as an ostrich, the eye and tail feathers set with round diamonds, the feet accented by two triangle-shaped citrines, *signed G. Rowlandson, Ollie, GB 243, RLD.*

US\$ 3,000-5,000





225

PROPERTY OF AN IMPORTANT PRIVATE COLLECTOR

Emerald and Diamond Necklace

Of graduated design, set with 16 larger oval-shaped emerald cabochons, framed by round diamonds, and 16 smaller emerald cabochons, length 15 inches.

US\$ 25,000-35,000



226

PROPERTY OF A LADY

Diamond Clip-Brooch, France

Of curved design, set with round and baguette diamonds, with French assay and workshop marks, with one section detachable for variety of wear.

US\$ 15,000-20,000



227

Diamond Ring

Set with a pear-shaped diamond weighing 6.78 carats, accented by two tapered baguette diamonds, size 5¾.

Accompanied by GIA report no. 2185271346 stating that the diamond is J color, VS2 clarity.

US\$ 50,000-70,000

Pair of Fancy Yellow Diamond and Diamond Earrings

Suspending two pear-shaped Fancy Yellow diamonds weighing 4.08 and 4.05 carats, the tops set with pear, oval, and marquise-shaped diamonds.

Accompanied by 12 GIA reports:

No. 115277796 stating that the diamond weighing 4.08 carats is Fancy Yellow, Natural Color, VS2 clarity.

No. 1213086903 stating that the diamond weighing 4.05 carats is Fancy Yellow, Natural Color, VS2 clarity.

The near colorless diamonds accompanied by eight GIA reports stating that the diamonds, ranging in size from 0.70 to 0.30 carats are D to F in color, VVS1 to SI1 in clarity.

US\$ 90,000-110,000





229

PROPERTY OF A PRIVATE COLLECTOR

Ruby, Enamel and Diamond Brooch

Designed as a basket of flowers, applied with green and orange champlevé enamel and cabochon rubies, the basket set with single-cut diamonds, *one ruby missing*.

US\$ 3,000-5,000



230

PROPERTY FROM A MIDWEST COLLECTION

Diamond Wristwatch

The rectangular dial with Arabic numeral indicators, framed by variously-cut diamonds, completed by a bracelet set with round diamonds, manual movement, *length 6 inches*.

US\$ 4,000-6,000



231

PROPERTY FORMERLY FROM THE COLLECTION OF GANNA WALSKA, THENCE BY DIRECT DESCENT TO THE PRESENT OWNER

Ruby and Diamond Ring, B. D. Howes

Centering an oval-shaped carved ruby scarab, flanked by two triangular Dutch rose-cut diamonds, accented by four smaller rose-cut diamonds, *size 6¾, signed Howes; circa 1920*.

US\$ 2,500-3,500

232

Pair of Diamond Pendant-Earrings

Of garland design, composed of pinched collet-set old European, old mine and single-cut diamonds, suspending swing-set pear-shaped diamonds; *circa 1910, posts later added.*

US\$ 10,000-15,000



233

Diamond and Ruby Ring

Centering a round diamond encircled by smaller round diamonds, the mounting embellished with millegrain-set round rubies and diamonds, *size 8.*

US\$ 15,000-20,000



(side view)

234

PROPERTY OF A PRIVATE COLLECTOR

Enamel and Diamond Pendant-Watch

Designed as a beetle, applied with blue, black and white enamel and accented by rose-cut diamonds, the eyes set with ruby cabochons, the wings open to reveal a circular dial with Arabic numeral indicators, manual movement, gross weight approximately 19 dwts, *caseback signed Kelbert Watch Co, with French import mark.*

US\$ 6,000-8,000





235

**Gold and Diamond Necklace,
Boucheron, France**

The necklace composed of textured gold links, accented with round diamonds, gross weight approximately 86 dwts, length 15½ inches, signed *Boucheron*, numbered E30249, with French assay and maker's mark, one small diamond missing. With signed pouch.

US\$ 10,000-15,000

236

PROPERTY OF A LADY

**Pair of Zircon, Aquamarine and Ruby
Earclips**

Each half-hoop earring of openwork design set with cushion-cut zircons, flanked by round rubies and aquamarines, one aquamarine missing. Fitted with posts.



PROVENANCE

Sotheby's Park-Bernet New York, April 1, 1971, The Important Jewelry Collection of Madame Ganna Walska, lot 113.

US\$ 5,000-7,000

237

**Diamond and Mother-of-Pearl 'Double
Elle' Wristwatch, Leviev**

Composed of a rectangular black mother-of-pearl dial with diamond-set Arabic numeral indicators, the bezel, buckle and crown accented by round diamonds, quartz movement, length 7 inches, the dial, caseback and buckle signed *Leviev*, the caseback numbered N 022 and 07154, with French assay and maker's marks.

Please note this lot is restricted to US only buyers due to endangered species materials.

© **US\$ 4,000-6,000**



238

PROPERTY OF A MIAMI COLLECTOR

Cultured Pearl and Diamond Pendant-Necklace, Cartier, France

Composed of alternating round and navette-shaped links set with round diamonds, suspending a detachable drop-shaped cultured pearl measuring approximately 10.9 by 13.0 mm, *signed Cartier, numbered 831837, with French assay and workshop marks. With signed box.*

US\$ 15,000-20,000



239

PROPERTY OF A MIAMI COLLECTOR

Pair of Diamond Earclips, Cartier

The links set with numerous round diamonds, *signed Cartier, numbered 661004, with British hallmarks and workshop marks. With signed box.*

US\$ 15,000-20,000



240

PROPERTY OF A DISTINGUISHED LADY

Two-Color Gold and Diamond Cuff-Bracelet, Buccellati

The brushed gold cuff-bracelet set with round and square-cut diamonds, gross weight approximately 32 dwts, *internal circumference 6½ inches, signed Mario Buccellati, with Italian assay and registry marks. With signed box.*

US\$ 8,000-12,000









241

Pair of Sapphire and Diamond Earclips, Raymond Yard

Of domed design, set with cabochon sapphires, embellished with round and baguette diamonds, signed Yard, numbered 126775.

Accompanied by a copy of AGL report no. CS 68528 A and B stating that an excess of 50% of the sapphires tested at random are of Burmese origin, with no evidence of heat treatment.

US\$ 18,000-22,000



242

Sapphire and Diamond Bracelet

Composed of square-shaped links set with old European-cut diamonds joined by blue enamel bar-shaped links, centering a cabochon sapphire within a surround set with old European and single-cut diamonds, length 6½ inches; circa 1930s.

US\$ 20,000-30,000



243

Sapphire and Diamond Ring

Centering a cushion-cut sapphire measuring approximately 13.2 x 10.6 x 6.8 mm, framed by old European and single-cut diamonds and calibr -cut sapphires, size 6¼.

Accompanied by AGL report no. CS 59278 stating that the sapphire is of Ceylon origin, with indications of heat treatment.

Accompanied by GIA report no. 6157817962 stating that the sapphire is of Sri Lankan origin, with indications of heat treatment.

US\$ 25,000-35,000

244

PROPERTY OF A LADY

Diamond Pendant-Necklace

Centering an old European-cut diamond, within a detachable navette-shaped openwork pendant further set with old European and single-cut diamonds, on a similarly-set chain, *length 21½ inches, numbered 6981; circa 1920.*

US\$ 20,000-30,000



245

Pair of Gem-Set Earclips, France

Each set with oval-shaped cabochon sapphires, flanked by oval-shaped and cushion-cut pink sapphires, accented by round and single-cut diamonds, *with French assay and workshop marks.*

US\$ 6,000-8,000



246

PROPERTY OF A PRIVATE COLLECTOR, CALIFORNIA

Diamond and Sapphire Ring, Cartier

Centering an oval-shaped diamond, framed by round sapphires and round diamonds, *size 5¼, signed Cartier, numbered 91719 and 17025.*

US\$ 5,000-7,000





247

Kunzite and Diamond Necklace

Set at intervals with 12 oval-shaped kunzites, framed and spaced by round and rose-cut diamonds, with a pavé-set clasp, *length 30 inches*.

US\$ 20,000-30,000



248

Pair of Amethyst and Diamond Earrings

The tops set with three round diamonds each supporting an amethyst drop, accented by numerous round diamonds.

US\$ 10,000-15,000



249

'Legacy' Diamond Ring, Tiffany & Co.

Centering a cushion modified brilliant-cut diamond weighing 3.18 carats, framed and accented by round diamonds, *size 6, signed Tiffany & Co., numbered 22564692*.

Accompanied by Tiffany & Co. Diamond Certificate 22564692/H12070084 stating that the diamond is H color, Internally Flawless.

US\$ 25,000-35,000

250

PROPERTY FROM A PRIVATE COLLECTION, TEXAS

Diamond Necklace

Suspending a pear-shaped diamond weighing 3.01 carats, length 16 inches.

Accompanied by GIA report no. 2181466437 stating that the diamond is F color, VS1 clarity.

US\$ 20,000-30,000



251

PROPERTY OF A LADY

Pair of Amethyst and Diamond Earclips, de Grisogono

The spherical tops and pendants set with round amethysts, joined by columns of bezel-set round diamonds, signed de Grisogono. Geneva, numbered B 61071, with maker's marks and Swiss assay marks. With signed box. Fitted with retractable posts.

Accompanied by a Certificate of Authenticity from de Grisogono.

US\$ 15,000-20,000



252

Amethyst and Diamond Ring

Set with a modified cushion-cut amethyst measuring approximately 20.6 x 16.9 x 9.6 mm, flanked by emerald-cut diamonds, further embellished with square-cut diamonds, size 5 $\frac{1}{4}$.

US\$ 6,000-8,000



PROPERTY FROM THE ESTATE OF GEORGE C. C. HO

LOTS 253-261



Born in Shanghai, China, George C. C. Ho educated himself as a young man by traveling extensively and acquired a taste for the finer things early in life. His charisma fostered friendships with influential people around the world. His family was in the coal business. He branched into the shipping business before leaving China in 1949 for the relative safety of Hong Kong. In 1959, he relocated his family to New York where he resided until his death at 98 in 2017.

Mr. Ho amassed a fine collection of Chinese paintings, calligraphy, jewelry, furniture and other objects of art. He had a deep appreciation of everything Chinese, especially old and classical

pieces. His efforts in collecting began in Hong Kong and intensified after retirement through his association with experts at international auction houses. He enjoyed the research and auction processes as much as the acquisitions themselves.

Mr. Ho's possession of the Anita Magsaysay-Ho's *Women with baskets and fruits*, being auctioned at Sotheby's Hong Kong in October, is a unique story. Anita married Robert C.F. Ho, the younger brother of George. Her passion for painting in her pioneering style dated back to the early 1940's in Manila. The family has long admired her as a champion of women at work.

253

PROPERTY FROM THE ESTATE OF GEORGE C.C. HO

Diamond Ring

Set with a round diamond weighing 4.14 carats, the split shank accented with pavé-set single-cut diamonds, size 5½.

Accompanied by GIA report no. 2185569485 stating that the diamond is E color, VS2 clarity.

US\$ 50,000-70,000



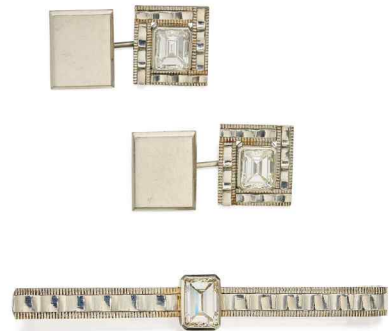
254

PROPERTY FROM THE ESTATE OF GEORGE C.C. HO

Pair of Diamond Cufflinks and Tie Tack

The cufflinks with each square face centering an emerald-cut diamond; the tie tack of similar design, set with an emerald-cut diamond, *all pieces signed GF & Co.*

US\$ 6,000-8,000



255

PROPERTY FROM THE ESTATE OF GEORGE C.C. HO

Pair of Jade and Gold Cufflinks and Brooch

The cufflinks set with oval-shaped jade cabochons, framed by stepped gold borders, gross weight approximately 11 dwts, *signed GF & Co.*; the brooch designed as a dragonfly, the head set with a cultured pearl measuring approximately 4.5 mm, the body composed of a marquise-shaped jade cabochon, gross weight approximately 3 dwts.

US\$ 1,500-2,500





256

PROPERTY FROM THE ESTATE OF GEORGE C.C. HO
Pair of Sapphire and Diamond Earclips

Of foliate design, set with two oval-shaped cabochon sapphires, accented by round and baguette diamonds.

US\$ 4,000-6,000



257

PROPERTY FROM THE ESTATE OF GEORGE C.C. HO
Sapphire and Diamond Ring

Centering an oval-shaped cabochon sapphire, framed and accented by round, old European-cut, baguette and single-cut diamonds, size 4½.

US\$ 7,500-10,000



258

PROPERTY FROM THE ESTATE OF GEORGE C.C. HO
Diamond Ring and a Brooch-Earclip Combination

Of foliate design, the earclips set with single-cut, old European-cut, round and baguette diamonds, accompanied by a detachable brooch fitting to be worn together as a double clip-brooch; the ring centering an old European-cut diamond, flanked by a pear-shaped and a round diamond, size 5½.

US\$ 4,000-6,000

259

PROPERTY FROM THE ESTATE OF GEORGE C.C. HO

Pair of Ruby and Diamond Earclips

Of foliate design, set with four cabochon rubies, accented by round and baguette diamonds.

US\$ 3,000-5,000



260

PROPERTY FROM THE ESTATE OF GEORGE C.C. HO

Ruby and Diamond Brooch

Designed as a stylized leafy vine, pavé-set with single-cut, round and baguette diamonds, supporting ten cabochon rubies.

US\$ 6,000-8,000



261

PROPERTY FROM THE ESTATE OF GEORGE C.C. HO

Ruby and Diamond Ring

Centering a cabochon ruby, framed by single-cut diamonds, *size 5½, one diamond missing.*

US\$ 8,000-12,000



262



Diamond Ring, Tiffany & Co.

Set with a round brilliant-cut diamond weighing 5.06 carats, flanked by two baguette diamonds, size 7¼, signed *Tiffany & Co.*

Accompanied by GIA report no. 2183243033 stating that the diamond is D color, VVS2 clarity.

US\$ 200,000-300,000

263

PROPERTY FROM A PRIVATE COLLECTION, TEXAS

Emerald and Diamond Ring, Tiffany & Co.

Set with a square-cut emerald weighing 3.20 carats, flanked by tapered baguette diamonds, size 5¾, signed Tiffany & Co. With signed box.

Accompanied by AGL report no. 1085373 stating that the emerald is of Classic Colombian origin, with no indications of clarity enhancement.

US\$ 50,000-70,000



264

PROPERTY FROM A PRIVATE COLLECTION, TEXAS

Pair of Emerald and Diamond 'Soleste' Earrings, Tiffany & Co.

Centering two round emeralds weighing 1.72 and 1.69 carats, framed and accented by round diamonds, signed Tiffany & Co., numbered 30250435. With signed pouch.

Accompanied by AGL report no. 1085374 A and B stating that the emeralds are of Zambian origin, clarity enhancement: minor, type: traditional.

US\$ 20,000-30,000



265

Fancy Intense Yellow Diamond and Diamond Ring, Tiffany & Co.

Centering a square modified-brilliant Fancy Intense Yellow diamond weighing 3.24 carats, the band highlighted with round diamonds, size 6, signed Tiffany & Co., numbered 27439683.

Accompanied by Tiffany & Co. Diamond Certificate 27439683/K10220169 stating that the diamond is Fancy Intense Yellow, Natural Color, VS1 clarity.

US\$ 25,000-35,000





266

Lapis Lazuli and Diamond Necklace and Bracelet

Composed of a highly articulated line of lapis lazuli beads and wave-shaped links, highlighted with pavé-set round diamonds, *necklace length 18½ inches, bracelet 7¾ inches, with Italian assay and registry marks.*

US\$ 20,000-30,000



267

Sapphire and Diamond Ring, Oscar Heyman & Brothers

Centering a cushion-cut sapphire weighing 5.03 carats, within a surround of round diamonds, the shank similarly embellished, *size 6, numbered 300344, with maker's mark.* With signed box.

Accompanied by AGL report no. 1085061 stating that the sapphire is of Burmese origin, with no indication of heat treatment.

US\$ 15,000-20,000



268

Pair of Sapphire and Diamond Earrings, Assil

The hoop-style earrings set with oval-shaped sapphires, bordered by round diamonds, *signed Assil.*

US\$ 18,000-20,000

269

Pair of Sapphire and Topaz Earclips, de
Grisogono

Designed as spiral drops, pavé-set with round
sapphires, suspending blue topaz cylinders,
signed De Grisogono, with maker's mark. Fitted
with retractable posts.

US\$ 6,000-8,000



270

'Lucida' Diamond Ring, Tiffany & Co.

Centering a cut-cornered rectangular-shaped
diamond weighing 3.40 carats, size 6, *signed
Tiffany & Co., numbered 18656582.*

*Accompanied by Tiffany & Co. Diamond
Certificate 18656582/F01080409 stating that the
diamond is E color, Internally Flawless.*

US\$ 40,000-60,000



271

Tanzanite and Diamond Ring, Sifen
Chang

Set with an oval-shaped tanzanite cabochon
weighing 20.43 carats, within a coral inspired
mounting pavé-set with round diamonds, size
6¼, *signed Sifen Chang in Chinese characters.*
With signed box.

US\$ 10,000-15,000





272

**Pair of Tanzanite and Diamond Earrings,
Tiffany & Co.**

The tops set with round diamonds, supporting tassels composed of tanzanite beads, *signed Tiffany & Co., numbered 28911238.*

US\$ 15,000-20,000



273

**Pair of Colored Stone and Diamond
Earclips**

Each suspending an oval-shaped tanzanite, accented by round and pear-shaped pink sapphires, the round pink sapphires weighing 1.02 and 1.01 carats, with calibr -cut and pear-shaped emeralds, further accented by round and baguette diamonds.

Accompanied by GIA report no. 1137338789 stating that the 1.01 carat pink sapphire is natural, with no indications of heating.

Accompanied by GIA report no. 6132338792 stating that the 1.02 carat pink sapphire is natural, with no indications of heating.

US\$ 10,000-15,000

△ 274

Diamond Ring

Set with a cushion-cut diamond weighing 12.52 carats, framed and accented by round diamonds, size 6¼.

Accompanied by GIA report no. 5181476985 stating that the diamond is Q-R color, VS1 clarity.

US\$ 80,000-120,000









© Brigitte Lacombe

PROPERTY FROM THE COLLECTION OF DANIELLE STEEL

LOTS 275-284

275

PROPERTY FROM THE COLLECTION OF
DANIELLE STEEL

Pair of Diamond and Colored Diamond Earclips, Repossi

Of floral design, centering two pear-shaped
Fancy Intense Yellow and Fancy Yellow diamonds
weighing 6.95 and 6.73 carats, accented with
round near colorless diamonds and diamonds of
yellow hue, *signed Repossi, with maker's mark.*

*Accompanied by GIA report no. 6187673505
stating that the 6.95 carat diamond is Fancy
Intense Yellow, Natural Color, SI1 clarity.*

*Accompanied by GIA report no. 2185673508
stating that the 6.73 carat diamond is Fancy
Yellow, Natural Color, SI1 clarity.*

*Please note that the round diamonds of yellow hue
have not been tested for natural origin of color.*

US\$ 90,000-110,000



PROPERTY FROM THE COLLECTION OF
DANIELLE STEEL

Emerald and Diamond Ring, Repossi

Set with a cut-cornered rectangular-shaped emerald weighing approximately 80.00 carats, the mounting accented by emeralds and diamonds, *size 6, signed Repossi, with Italian assay and registry marks.*

Accompanied by AGL report no. 1086555 stating that the emerald is of Colombian origin, clarity enhancement: minor, type: modern.

US\$ 75,000-100,000



(side view)



277

PROPERTY FROM THE COLLECTION OF DANIELLE STEEL

**Rubellite and Diamond Ring,
Michele della Valle**

The mixed cushion-cut rubellite weighing 40.01 carats, with pavé-set prongs, size 6, with maker's mark.

US\$ 15,000-20,000



278

PROPERTY FROM THE COLLECTION OF DANIELLE STEEL

**Pair of Rubellite and Diamond Earclips,
Michele della Valle**

Set with two cushion-cut rubellites weighing a total of 150.66 carats, framed and accented by round diamonds, with maker's mark.

US\$ 25,000-35,000



279

PROPERTY FROM THE COLLECTION OF DANIELLE STEEL

Gold and Diamond Brooch

Designed as an elephant's head, set with numerous round and baguette diamonds.

US\$ 6,000-8,000

PROPERTY FROM THE COLLECTION OF DANIELLE STEEL

Gem-Set 'Blackamoor' Brooch, Verdura

Set with a carved onyx head, a rubellite body (the rubellite later added), his outfit decorated with round diamonds, embellished with seed pearl ear pendants and a necklace supporting a briolette diamond, his hand and dagger applied with white and black enamel and round diamonds of yellow hue, the turban highlighted by cultured pearls and round near-colorless diamonds, the textured gold falcon decorated with blue enamel and a carved ruby feather, *signed Verdura, with workshop mark, one small diamond missing.*

Please note that the diamonds of yellow hue have not been tested for natural origin of color.

For a brooch of similar design, see Verdura: The Life and Work of a Master Jeweler by Patricia Corbett, page 32; a brooch of similar design is also illustrated on page 164 of the same book.

US\$ 40,000-60,000



PROPERTY FROM THE COLLECTION OF DANIELLE STEEL

Pair of Diamond Earclips, Repossi

Of bombé form, set with round and baguette diamonds, *signed Repossi, with workshop mark.*

US\$ 15,000-20,000



282

PROPERTY FROM THE COLLECTION OF DANIELLE STEEL

Colored Diamond and Yellow Sapphire Ring, Repossi



Centering a round diamond of yellow hue measuring approximately 16.4 x 16.4 x 9.9 mm, flanked by two pear-shaped diamonds of yellow hue, framed and accented by calibr -cut yellow sapphires and diamonds, size 6, *partially signed Repossi, with Italian assay and registry marks.*

Please note that the diamonds of yellow hue have not been tested for natural origin of color.

US\$ 100,000-150,000

283

PROPERTY FROM THE COLLECTION OF DANIELLE STEEL

Nephrite, Ruby and Diamond 'Chimera' Bracelet, David Webb

The opposing chimeras composed of carved nephrite decorated with round diamonds and two cabochon rubies, completed by four pear-shaped ruby eyes, *internal circumference 6½ inches, signed David Webb.*

US\$ 30,000-50,000



284

PROPERTY FROM THE COLLECTION OF DANIELLE STEEL

Nephrite, Ruby and Diamond Ring, David Webb

Of bombé form, set with fluted nephrite featuring five cabochon rubies, further accented by round diamonds, *size 6, signed Webb.*

US\$ 7,000-9,000





□ 285

Fancy Colored Diamond and Diamond Ring

Set with: two cushion-cut Fancy Pink-Purple diamonds, an oval-shaped Fancy Vivid Orange-Yellow diamond, a square round-cornered square modified brilliant-cut Fancy Vivid Yellow diamond, and a cushion-cut Fancy Blue-Gray diamond, accented by small round diamonds, size 5¼.

Accompanied by five GIA reports:

No. 5161971011 stating that the diamond weighing 0.35 carat is Fancy Pink-Purple, Natural Color.

No. 2165971019 stating that the diamond weighing 0.33 carat is Fancy Pink-Purple, Natural Color.

No. 5161241034 stating that the diamond weighing 0.41 carat is Fancy Vivid Orange-Yellow, Natural Color.

No. 2161354961 stating that the diamond weighing 0.43 carat is Fancy Vivid Yellow, Natural Color, VS2 clarity.

No. 6137637509 dated July 28, 2011 stating that the diamond weighing 0.41 carat is Fancy Blue-Gray Color, Natural Color.

US\$ 10,000-15,000

286

PROPERTY SOLD TO BENEFIT A CHARITABLE CAUSE

Fancy Deep Orangy Pink Diamond Ring

Set with an oval-shaped Fancy Deep Orangy Pink diamond weighing 0.70 carat, size 6¼.

Accompanied by GIA report no. 2145173426, dated January 9, 2012, stating that the diamond measuring is Fancy Deep Orangy Pink, Natural Color, SI1 clarity.

US\$ 10,000-15,000

287

Pair of Diamond Earclips, Assil

The button-shaped domes set with numerous round diamonds, *signed Assil*. Fitted with posts.

US\$ 20,000-30,000

288

PROPERTY OF AN IMPORTANT PRIVATE COLLECTOR

Pair of Colored Diamond and Diamond Earclips, Van Cleef & Arpels

Designed as interlocking drop-shaped motifs, pavé-set with round diamonds of near colorless and yellow hues, *signed Van Cleef and Arpels, numbered NY 504741.*

Please note that the diamonds of yellow hue have not been tested for natural origin of color.

US\$ 10,000-15,000



289

PROPERTY FROM THE ESTATE OF AN IMPORTANT COLLECTOR, CHICAGO, ILLINOIS

Diamond Ring

Set with a marquise-shaped diamond weighing 3.23 carats, flanked by two pear-shaped diamonds, *size 4½.*

Accompanied by GIA report no. 2183569553 stating that the diamond is D color, VS2 clarity.

US\$ 20,000-30,000



290

Diamond Ring, France

Of bombé form, set with round diamonds, *size 6, with French assay and maker's mark.*

US\$ 10,000-15,000





291

Emerald and Diamond Clip-Brooch

Of foliate design, centering an emerald-cut emerald measuring approximately 12.8 x 11.6 x 2.7 mm, within a cluster surround of round, pear and marquise-shaped diamonds.

US\$ 20,000-30,000



292

PROPERTY OF A PRIVATE COLLECTOR, CALIFORNIA

Emerald and Diamond Ring

Centering an emerald-cut emerald weighing 5.51 carats, flanked by shield-shaped and single-cut diamonds, size 5.

Accompanied by AGL report. no. 1083315 stating that the emerald is of Colombian origin, clarity enhancement: minor, type: traditional.

US\$ 20,000-30,000



293

Diamond Bracelet, Tiffany & Co.

Composed of stylized floral links set with old European-cut, round and baguette diamonds, length 6¾, signed Tiffany & Co.

US\$ 15,000-20,000

294

PROPERTY FROM THE ESTATE OF FRANCES
MACDONALD

Diamond Ring

Set with a cut-cornered rectangular modified brilliant-cut diamond weighing 10.96 carats, size 6½.

Accompanied by GIA report no. 1182197908 stating that the diamond is J color, SI1 clarity.

US\$ 100,000-150,000





PROPERTY FROM
THE COLLECTION
OF AERIN LAUDER
ZINTERHOFER

SOLD TO BENEFIT
THE BREAST CANCER
RESEARCH FOUNDATION



In December 2012, Sotheby's was honored to offer a collection of magnificent jewels from the collections of Estée Lauder and Evelyn H. Lauder. Sold to benefit the Breast Cancer Research Foundation (BCRF), the highest-rated breast cancer organization in the country, the auction culminated in the sale of an exquisite Fancy Intense Pink diamond ring from the collection of Evelyn H. Lauder, BCRF founder, which achieved a spectacular \$8.6 million to support research. Almost five years after this auction, we at Sotheby's are honored to continue the Lauder legacy by presenting jewels from the collection of Aerin Lauder Zinterhofer. Sold to benefit the Breast Cancer Research Foundation in October, Breast Cancer Awareness Month, the jewels selected by Aerin epitomize the Lauder traditions of elegance, luxury and, above all, philanthropy.

Many of Aerin Lauder's earliest memories are those of her grandmother Estée, specifically in terms of her scent and her jewelry. Estée's affinity for bold statement jewels and the importance of updating one's look for daytime and evening is one that inspired Aerin as she launched her eponymous brand in 2012, after two decades of working in various divisions of Estée Lauder Inc. AERIN is rooted in the idea that living beautifully should be easy; the brand presents curated collections in the worlds of beauty, fashion accessories and home décor. The new AERIN Tuberose Collection, which features two scents – Tuberose Le Jour and Tuberose Le Soir – brings to life the unique beauty and opulent aura of the tuberose, a

flower whose scent transforms from day to night. Reminiscent of fine jewelry, each translucent glass fragrance bottle is adorned with a suede-like cord and a golden cap, with the fragrance names engraved on luxurious golden plaques.

Building upon the lessons learned from her grandmother, the launch of the AERIN Tuberose Collection presented Lauder with a unique opportunity to unite her shared passions of scent and jewelry. Aerin has consigned two jewels of her own, with proceeds benefiting the BCRF, that speak to her favorite types of embellishment for day and evening. A bold, geometric ring by David Webb highlighted by rock crystal accented with diamonds presents a playful option for daytime, while a bombé styled ring studded with diamonds and textured gold by Van Cleef & Arpels makes for a glamorous evening addition.

In working with Lauder on the consignment of these two jewels upon the release of the AERIN Tuberose Collection, the sensory connection between jewels and fragrance has been brought to the forefront. Both categories have the capacity to transform a woman from day to evening, season to season. Both categories also stand the test of time, with many scents and jewels coveted for generations for having an eternally chic quality. Most importantly, however, each category presents the power of choice in how to represent oneself. The modern woman is her own muse; she is able to seamlessly refresh her look with the addition of a fragrance or a cocktail ring, granting a feeling of great luxury in two simple steps.



Credit: Julian Cassady



THE BREAST CANCER RESEARCH FOUNDATION

The Breast Cancer Research Foundation (BCRF) is dedicated to being the end of breast cancer by advancing the world's most promising research. Founded by Evelyn H. Lauder in 1993, BCRF-funded investigators have been deeply involved in every major breakthrough in breast cancer prevention, diagnosis, treatment and survivorship. This year, BCRF will award \$59.5 million to support the work of more than 275 scientists at leading

medical and academic institutions across 15 countries, making BCRF the largest private funder of breast cancer research worldwide. BCRF is the highest rated breast cancer organization in the U.S. — the only one with an "A+" from CharityWatch and Charity Navigator's highest rating of four stars.

Visit www.bcrfcure.org to learn more.

295

FROM THE COLLECTION OF AERIN LAUDER
ZINTERHOFER, SOLD TO BENEFIT THE BREAST
CANCER RESEARCH FOUNDATION

**Gold, Rock Crystal and Diamond Ring,
David Webb**

Centering a triangle-shaped rock crystal,
accented by baguette and triangle-shaped
diamonds, *size 5¾*.

US\$ 4,000-6,000



296

FROM THE COLLECTION OF AERIN LAUDER
ZINTERHOFER, SOLD TO BENEFIT THE BREAST
CANCER RESEARCH FOUNDATION

**Gold and Diamond Ring, Van Cleef &
Arpels**

Of bombé form, centering three rows of round
diamonds, accented by gold ropework and foliate
motifs further set with round diamonds, gross
weight approximately 12 dwts, *size 5½, signed
VCA, numbered 43097; circa 1970*.

US\$ 8,000-12,000



297

PROPERTY FROM A FAMILY COLLECTION

Diamond Ring

Set with a marquise-shaped diamond weighing 6.94 carats, accented by baguette and single-cut diamonds, size 5½.

Accompanied by GIA report 2185477009 stating that the diamond is H color, VS1 clarity.

US\$ 60,000-80,000



298

PROPERTY FROM A FAMILY COLLECTION

Diamond Ring

Set with a cushion-cut diamond weighing 5.40 carats, size 5.

Accompanied by GIA report 1182530514 stating that the diamond is K color, VS2 clarity.

US\$ 30,000-50,000



PROPERTY FROM A FAMILY COLLECTION

Diamond Ring

Set with a square emerald-cut diamond weighing 6.24 carats, accented by round and French-cut diamonds, size 5¾.

Accompanied by GIA report 1186655980 stating that the diamond is E color, VVS1 clarity. Together with the original working diagram stating that the diamond may be potentially Internally Flawless.

US\$ 110,000-150,000



PROPERTY FROM A FAMILY COLLECTION

Fancy Yellow Diamond and Diamond Ring

Set with a round Fancy Yellow diamond weighing 3.82 carats, flanked by two pear-shaped diamonds, size 5.

Accompanied by GIA report 5251702, dated July 31, 1989, stating that the diamond is Fancy Yellow, Natural Color, Internally Flawless.

US\$ 25,000-35,000





301

FROM A PRIVATE COLLECTION OF TIFFANY & CO. JEWELS

Garnet, Diamond and Onyx 'Ostrich' Clip-Brooch, Tiffany & Co., France

The body pavé-set with round spessartite garnets, the plumage with round diamonds, the eyes set with two onyx cabochons, *signed Tiffany & Co., France*. With signed box.

US\$ 20,000-30,000



302

FROM A PRIVATE COLLECTION OF TIFFANY & CO. JEWELS

Sapphire and Diamond 'Daggar' Bracelet, Tiffany & Co.

Composed of gold links resembling chain mail, with a daggar-shaped clasp set with a sapphire bead and round diamonds, *length 7¾ inches, signed Tiffany & Co.*

US\$ 5,000-7,000



303

FROM A PRIVATE COLLECTION OF TIFFANY & CO. JEWELS

Plique-à-Jour Enamel and Diamond Clip-Brooch, Tiffany & Co.

Designed as a lily, with oranger pink plique-à-jour enamel leaves dotted with round diamonds, the stem pavé-set with round diamonds, with textured gold pistils, *signed Tiffany & Co., numbered 23521768*. With signed pouch.

Reminiscent of Louis Comfort Tiffany's Art Nouveau style, this clip-brooch took more than five months to create and was hand assembled from more than 30 separate pieces.

LITERATURE

Featured in the 2008-2009 Tiffany & Co. Blue Book.

US\$ 25,000-35,000

304

FROM A PRIVATE COLLECTION OF TIFFANY & CO.
JEWELS

**Pink Tourmaline, Morganite and
Diamond Bracelet, Tiffany & Co.**

Of floral design, set with pear-shaped pink
tourmaline and morganite petals, highlighted with
round diamonds, *length 7¼ inches, signed Tiffany
& Co., numbered 21932507.*

US\$ 30,000-50,000



305

FROM A PRIVATE COLLECTION OF TIFFANY & CO.
JEWELS

**Morganite and Diamond Ring, Tiffany &
Co.**

Set with a cushion-cut morganite within a
surround of round diamonds, the shank further
highlighted with round diamonds, *size 7½, signed
Tiffany & Co., numbered 31762812.* With signed
pouch.

US\$ 4,000-6,000





306

FROM A PRIVATE COLLECTION OF TIFFANY & CO.
JEWELS

**Diamond, Garnet, Lacquer and Cultured
Pearl 'Emperor Penguin' Clip-Brooch,
Tiffany & Co., France**

Designed as a penguin, decorated with round diamonds, spessartite garnets and black lacquer, with an oval-shaped cultured pearl egg measuring approximately 11.0 by 9.5 mm, *signed Tiffany & Co., France*. With signed box.

LITERATURE

Featured in the 2007-2008 Tiffany & Co. Blue Book.

US\$ 15,000-20,000



307

FROM A PRIVATE COLLECTION OF TIFFANY & CO.
JEWELS

**Tourmaline, Aquamarine and Diamond
'Jellyfish' Clip-Brooch, Tiffany & Co.,
France**

Featuring an oval-shaped bi-colored tourmaline, accented with round and square-cut aquamarines and pavé-set round diamonds, *signed Tiffany & Co., France*. With signed pouch.

US\$ 12,000-15,000

308

FROM A PRIVATE COLLECTION OF TIFFANY & CO.
JEWELS

**Sapphire and Diamond 'Floating Circles'
Bracelet, Tiffany & Co.**

Of whimsical design, set with round sapphires of various blue tones, framed and embellished by round diamonds, *length 7¼ inches, signed Tiffany & Co., numbered 23155923*. With signed box.

LITERATURE

Featured in the 2007-2008 Tiffany & Co. Blue Book.

US\$ 40,000-60,000



309

FROM A PRIVATE COLLECTION OF TIFFANY & CO.
JEWELS

**Pair of Tanzanite and Diamond Earrings,
Tiffany & Co.**

Each earring set with two round tanzanites and a line of round diamonds, supporting two tanzanite drops capped by round diamonds, *signed T & Co.* With signed box.

US\$ 18,000-22,000



310

FROM A PRIVATE COLLECTION OF TIFFANY & CO.
JEWELS

Tanzanite and Diamond Ring, Tiffany & Co.

Set with a cushion-cut tanzanite weighing 6.65 carats, accented by bullet-shaped and round diamonds, *size 6, signed Tiffany & Co., numbered 23981424*. With signed box.

US\$ 5,000-7,000



End of Sale

Sotheby's EST. 1744
Collectors gather here.

Collections & Curiosities
Auction New York 19 October 2017

Viewing 13-18 October

1334 YORK AVENUE, NEW YORK, NY 10021

ENQUIRIES +1 212 606 7160 JOHN.WARD@SOTHEBYS.COM
SOTHEBYS.COM/DECARTS

DOWNLOAD SOTHEBY'S APP
FOLLOW US @SOTHEBYS





ANDY WARHOL. \$(4), 1982

TREASURE THE ART.
UNLOCK THE VALUE.

As the art market reaches new heights, it is time to look at your art in a new light.

Sotheby's Financial Services allows you to enjoy your investment in fine art, decorative art or jewellery with renewed liquidity, capitalising on its value while maintaining ownership.

With over 25 years of experience in art lending, more than \$4 billion in loans made to date, and in-depth knowledge of the international art market, we can arrange truly bespoke financing solutions for our clients.

Comprehensive valuations from renowned specialists combined with unparalleled market expertise enable us to offer loans discreetly and with unmatched speed.

Contact us for a confidential consultation today.

Enquiries

New York +1 212 894 1130
Londres +44 (0) 207 293 6006
Hong Kong +852 2822 8188
services@sothebysfinancial.com
sothebysfinancial.com

Sotheby's EST. 1744
Financial Services

Sotheby's EST. 1744 Wine

DISCOVER NEW WINES THIS FALL

Sotheby's Wine is more than an auctioneer.
We are a global retailer with stores in New
York and Hong Kong.

Visit us online at sothebyswine.com.



1334 YORK AVENUE, NEW YORK, NY 10021
NEW YORK +1 212 894 1900

5TH FLOOR, ONE PACIFIC PLACE, HONG KONG
HONG KONG +852 2886 7888 WINE@SOTHEBYS.COM

ABSENTEE/TELEPHONE BIDDING FORM

Sale Number N09692 | **Sale Title** FINE JEWELS | **Sale Date** 17 OCTOBER 2017

Please see the important information regarding absentee bidding on the reverse of this form.
Forms should be completed in ink and emailed, mailed or faxed to the Bid Department at the details below.

SOTHEBY'S ACCOUNT NUMBER (IF KNOWN) _____

TITLE FIRST NAME LAST NAME

COMPANY NAME _____

ADDRESS _____

POSTAL CODE COUNTRY

DAYTIME PHONE MOBILE PHONE FAX

EMAIL _____

Please indicate how you would like to receive your invoices: Email Post/Mail

Telephone number during the sale (Telephone bids only) _____

Please write clearly and place your bids as early as possible, as in the event of identical bids, the earliest bid received will take precedence. Bids should be submitted at least 24 hours before the auction.

LOT NUMBER	LOT DESCRIPTION	MAXIMUM USD PRICE OR TICK ✓ FOR PHONE BID (EXCLUDING PREMIUM AND TAX)
		\$
		\$
		\$
		\$
		\$
		\$
		\$
		\$
		\$
		\$
		\$
		\$
		\$
		\$
		\$
		\$

We will send you a shipping quotation for this and future purchases unless you select one of the check boxes below. Please provide the name and address for shipment of your purchases, if different from above.

NAME AND ADDRESS _____

POSTAL CODE COUNTRY

- I will collect in person
- I authorize you to release my purchased property to my agent/shipper (provide name) _____
- Send me a shipping quotation for purchases in this sale only

I agree to be bound by Sotheby's "Conditions of Sale" and the information set out overleaf in the Guide for Absentee and Telephone Bidders, which is published in the catalogue for the sale. I consent to the use of this information and any other information obtained by Sotheby's in accordance with the Guide for Absentee and Telephone Bidders and Conditions of Sale.

SIGNATURE PRINT NAME DATE

GUIDE FOR ABSENTEE AND TELEPHONE BIDDERS

If you are unable to attend an auction in person, you may give Sotheby's Bid Department instructions to bid on your behalf by completing the form overleaf. This service is confidential and available at no additional charge.

General

This service is free and confidential.

Please record accurately the lot numbers, descriptions and the top hammer price you are willing to pay for each lot.

We will try to purchase the lot(s) of your choice for the lowest price possible and never for more than the maximum bid amount you indicate.

"Buy" or unlimited bids will not be accepted.

Alternative bids can be placed by using the word "OR" between lot numbers. Then if your bid on an early lot is successful, we will not continue to bid on other lots for you. Or, if your early bids are unsuccessful, we will continue to execute bids for alternative lots until a bid is successful.

Bids must be placed in the same order as in the catalogue.

The form should be used for one sale only – please indicate the sale number, title and date on the form.

Please place your bids as early as possible, as in the event of identical bids the earliest received will take precedence. Wherever possible bids should be submitted at least twenty-four hours before the auction.

Where appropriate, your bids will be rounded down to the nearest amount consistent with the auctioneer's bidding increments.

Absentee bids, when placed by telephone, are accepted only at the caller's risk and must be confirmed by letter or fax to the Bid Department on +1 212 606 7016.

Please note that the execution of written bids is offered as an additional service for no extra charge at the bidder's risk and is undertaken subject to Sotheby's other commitments at the time of the auction; Sotheby's therefore cannot accept liability for error or failure to place such bids, whether through negligence or otherwise.

Successful bidders will receive an invoice detailing their purchases and giving instructions for payment and clearance of goods. Unsuccessful bidders will be advised.

Please note Sotheby's reserves the right to refuse to accept payment from a source other than the buyer of record.

All bids are subject to the conditions of sale and terms of guarantee applicable to the sale printed in the sale catalogue. Buyer's premium in the amount stated in paragraph 3 of the Conditions of Sale in the back of the sale catalogue will be added to the hammer price as part of the total purchase price, plus any applicable sales tax.

In the event that you are successful, payment is due immediately after the sale unless otherwise agreed in advance. Payment may be made by bank transfer, credit card (which may be subject to a convenience fee), check or cash (up to US\$10,000). You will be sent full details on how to pay with your invoice. It is against Sotheby's general policy to accept single or multiple related payments in the form of cash or cash equivalents in excess of US\$10,000.

It is Sotheby's policy to request any new clients or purchasers preferring to make a cash payment to provide: proof of identity (by providing some form of government issued identification containing a photograph, such as a passport, identity card or driver's license) and confirmation of permanent address.

We reserve the right to seek identification of the source of funds received.

Data Protection

Sotheby's will use information provided by its clients (or which Sotheby's otherwise obtains from eBay or other sources relating to its clients) for the provision of auction and other art-related services, loan services, client administration, marketing and otherwise to manage and operate its business, or as required by law, in accordance with Sotheby's Privacy Policy. This will include information such as the client's name and contact details, proof of identity, financial information, records of the client's transactions, and preferences. Some gathering of information about Sotheby's clients will take place using technical means to identify their preferences in order to provide a higher quality of service to them. Sotheby's may also disclose the client information to other Sotheby's Companies and/or third parties acting on their behalf to provide services

for these purposes.

Sometimes, Sotheby's may also disclose this information to carefully selected third parties for their own marketing purposes. If you do not wish your details to be used for this purpose, please email enquiries@sothebys.com.

If the client provides Sotheby's with information that is defined by European data protection laws as "sensitive", the client agrees that it may be used for the purposes set out above.

In the course of these disclosures, personal data collected in the European Economic Area may be disclosed to countries outside the European Economic Area. Although such countries may not have legislation that protects a client's personal information, Sotheby's shall take great care to keep such information secure and in accordance with European data protection principles. By agreeing to these Conditions of Business, the client is agreeing to such disclosure.

Please be aware that Sotheby's may film auctions or other activities on Sotheby's premises and that such recordings may be transmitted over the Internet via Sotheby's website, the eBay website and other Online Platforms. Telephone bids may be recorded.

Under European data protection laws, a client may object, by request and free of charge, to the processing of their information for certain purposes, including direct marketing, and may access and rectify personal data relating to them and may obtain more information about Sotheby's data protection policies by writing to Sotheby's, 34-35 New Bond Street, London W1A 2AA, or 1334 York Avenue, New York, NY 10021, Attn: Compliance, or emailing enquiries@sothebys.com. Sotheby's use of information collected about eBay users may differ and is governed by the terms of the eBay Privacy Policy and Sotheby's on eBay Live Auction Platform Privacy Policy, which can be found on the Sotheby's on eBay Live Auction Website.

Important

Please note that the execution of written and telephone bids is offered as an additional service for no extra charge, and at the bidder's risk. It is undertaken subject to Sotheby's other commitments at the time of the auction. Sotheby's therefore cannot accept liability for failure to place such bids, whether through negligence or otherwise. All bids will be executed and are accepted subject to the "Conditions of Sale" and "Terms of Guarantee" printed in the catalogue for the sale. Please note that a buyer's premium in the amount stated in paragraph 3 of the "Conditions of Sale" in the back of the sale catalogue will be added to the hammer price as part of the total purchase price, plus any applicable sales tax.

New Clients

Please note that we may contact you to request a bank reference. In addition Sotheby's requires a copy of government issued photo ID in order to generate a new account. If you have opened a new account with Sotheby's since 1 December, 2002, and have not already done so, you will be asked to present appropriate documentation confirming your identity before your lots or sale proceeds can be released to you.

For Written/Fixed Bids

- Bids will be executed for the lowest price as is permitted by other bids or reserves.
- "Buy" or unlimited bids will not be accepted and we do not accept "plus one" bids. Please place bids in the same order as in the catalogue.
- Always indicate a "top limit" — the amount up to which you would bid if you were attending the auction yourself.
- Alternative bids can be placed by using the word "or" between lot numbers.
- Where appropriate your written bids will be rounded down to the nearest amount consistent with the auctioneer's bidding increments.

For Telephone Bids

Please clearly specify the telephone number on which you may be reached at the time of the sale, including the country code. We will call you from the saleroom shortly before your lot is offered.

CONDITIONS OF SALE

The following Conditions of Sale and Terms of Guarantee are Sotheby's, Inc. and the Consignor's entire agreement with the purchaser and any bidders relative to the property listed in this catalogue.

The Conditions of Sale, Terms of Guarantee, the glossary, if any, and all other contents of this catalogue are subject to amendment by us by the posting of notices or by oral announcements made during the sale. The property will be offered by us as agent for the Consignor, unless the catalogue indicates otherwise.

By participating in any sale, you acknowledge that you are bound by these terms and conditions.

1. **As Is** Goods auctioned are often of some age. The authenticity of the Authorship (as defined below) of property listed in the catalogue is guaranteed as stated in the Terms of Guarantee and except for the Limited Warranty contained therein, all property is sold "AS IS" without any representations or warranties by us or the Consignor as to merchantability, fitness for a particular purpose, the correctness of the catalogue or other description of the physical condition, size, quality, rarity, importance, medium, frame, provenance, exhibitions, literature or historical relevance of any property and no statement anywhere, whether oral or written, whether made in the catalogue, an advertisement, a bill of sale, a salesroom posting or announcement, or elsewhere, shall be deemed such a warranty, representation or assumption of liability. We and the Consignor make no representations and warranties, express or implied, as to whether the purchaser acquires any copyrights, including but not limited to, any reproduction rights in any property. We and the Consignor are not responsible for errors and omissions in the catalogue, glossary, or any supplemental material. Sotheby's will not be responsible or liable for damage to frames and glass coverings, regardless of the cause.

2. **Inspection** Prospective bidders should inspect the property before bidding to determine its condition, size, and whether or not it has been repaired or restored.

3. **Buyer's Premium** A buyer's premium will be added to the hammer price and is payable by the purchaser as part of the total purchase price. The buyer's premium is 25% of the hammer price up to and including \$250,000, 20% of any amount in excess of \$250,000 up to and including \$3,000,000, and 12.5% of any amount in excess of \$3,000,000.

4. **Withdrawal** We reserve the right to withdraw any property before the sale and shall have no liability whatsoever for such withdrawal.

5. **Per Lot** Unless otherwise announced by the auctioneer, all bids are per lot as numbered in the catalogue.

6. **Bidding** We reserve the right to reject any bid. The highest bidder acknowledged by the auctioneer will be the purchaser. The auctioneer has absolute and sole discretion in the case of error or dispute with respect to bidding, and whether during or after the sale, to determine the successful bidder, to re-open the bidding, to cancel the sale or to re-offer and re-sell the item in dispute. If any dispute arises after the sale, our sale record is conclusive. In our discretion we will execute order or absentee bids and accept telephone bids and online bids via BIDnow, eBay, Invaluable or other online platforms as a convenience to clients who are not present at auctions; Sotheby's is not responsible for any errors or omissions in connection therewith. Prospective bidders should also consult sothebys.com for the most up to date cataloguing of the property in this catalogue.

By participating in the sale, you represent and warrant that any bids placed by you, or on your behalf, are not the product of any collusive or other anti-competitive agreement and are otherwise consistent with federal and state antitrust law.

In order to bid on "Premium Lots" you must complete the

required Premium Lot pre-registration application. Sotheby's decision whether to accept any pre-registration application shall be final. You must arrange for Sotheby's to receive your pre-registration application at least three working days before the sale. Please bear in mind that we are unable to obtain financial references over weekends or public holidays.

Sotheby's may require such necessary financial references, guarantees, deposits and/or such other security, in its absolute discretion, as security for your bid(s).

7. **Online Bids via BIDnow or other Online Platforms:** Sotheby's may offer clients the opportunity to bid online via BIDnow, eBay, Invaluable or other Online Platforms for selected sales. By participating in a sale via any of these Online Platforms, you acknowledge that you are bound by these Conditions of Sale as well as the Additional Terms and Conditions for Live Online Bidding ("Online Terms"). By participating in a sale via any Online Platform, Bidders accept the Online Terms, as well as the relevant Conditions of Sale. Online bidding may not be available for Premium Lots.

8. **Bids Below Reserve** If the auctioneer determines that any opening bid is below the reserve of the article offered, he may reject the same and withdraw the article from sale, and if, having acknowledged an opening bid, he determines that any advance thereafter is insufficient, he may reject the advance.

9. **Purchaser's Responsibility** Subject to fulfillment of all of the conditions set forth herein, on the fall of the auctioneer's hammer, the contract between the consignor and the purchaser is concluded, and the winning bidder thereupon will immediately pay the full purchase price or such part as we may require. Title in a purchased lot will not pass until Sotheby's has received the full purchase price in cleared funds. The purchaser's obligation to immediately pay the full purchase price or such part as we may require is absolute and unconditional and is not subject to any defenses,

setoffs or counterclaims of any kind whatsoever. Sotheby's is not obligated to release a lot to the purchaser until title to the lot has passed and any earlier release does not affect the passing of title or the Purchaser's unconditional obligation to pay the full purchase price. In addition to other remedies available to us by law, we reserve the right to impose from the date of sale a late charge of the annual percentage rate of Prime + 6% of the total purchase price if payment is not made in accordance with the conditions set forth herein. Please note Sotheby's reserves the right to refuse to accept payment from a source other than the buyer of record.

Unless otherwise agreed by Sotheby's, all property must be removed from our premises by the purchaser at his expense not later than 30 calendar days following its sale. Buyers are reminded that Sotheby's liability for loss or damage to sold property shall cease no later than 30 calendar days after the date of the auction. If any applicable conditions herein are not complied with by the purchaser, the purchaser will be in default and in addition to any and all other remedies available to us and the Consignor by law, including, without limitation, the right to hold the purchaser liable for the total purchase price, including all fees, charges and expenses more fully set forth herein, we, at our option, may (x) cancel the sale of that, or any other lot or lots sold to the defaulting purchaser at the same or any other auction, retaining as liquidated damages all payments made by the purchaser, or (y) resell the purchased property, whether at public auction or by private sale, or (z) effect any combination thereof. In any case, the purchaser will be liable for any deficiency, any and all costs, handling charges, late charges, expenses of both sales, our commissions on both sales at our regular rates, legal fees and expenses, collection fees and incidental damages. We may, in our sole discretion, apply any proceeds of sale then due or thereafter becoming due to the purchaser from us or any affiliated company, or any payment made by the purchaser to us or any affiliated company, whether or not intended to reduce the purchaser's

obligations with respect to the unpaid lot or lots, to the deficiency and any other amounts due to us or any affiliated companies. In addition, a defaulting purchaser will be deemed to have granted and assigned to us and our affiliated companies, a continuing security interest of first priority in any property or money of or owing to such purchaser in our possession, custody or control or in the possession, custody or control of any of our affiliated companies, in each case whether at the time of the auction, the default or if acquired at any time thereafter, and we may retain and apply such property or money as collateral security for the obligations due to us or to any affiliated company of ours. We shall have all of the rights accorded a secured party under the New York Uniform Commercial Code. You hereby agree that Sotheby's may file financing statements under the New York Uniform Commercial Code without your signature. Payment will not be deemed to have been made in full until we have collected good funds. Any claims relating to any purchase, including any claims under the Conditions of Sale or Terms of Guarantee, must be presented directly to Sotheby's. In the event the purchaser fails to pay any or all of the total purchase price for any lot and Sotheby's nonetheless elects to pay the Consignor any portion of the sale proceeds, the purchaser acknowledges that Sotheby's shall have all of the rights of the Consignor to pursue the purchaser for any amounts paid to the Consignor, whether at law, in equity, or under these Conditions of Sale.

10. Reserve All lots in this catalogue are offered subject to a reserve, which is the confidential minimum hammer price at which a lot will be sold. No reserve will exceed the low presale estimate stated in the catalogue, or as amended by oral or posted notices. We may implement such reserve by opening the bidding on behalf of the Consignor and may bid up to the amount of the reserve, by placing successive or consecutive bids for a lot, or bids in response to other bidders. In instances where we have an interest in the lot other than our

commission, we may bid up to the reserve to protect such interest. In certain instances, the Consignor may pay us less than the standard commission rate where a lot is "bought-in" to protect its reserve.

11. Tax Unless exempted by law, the purchaser will be required to pay the combined New York State and local sales tax, any applicable compensating use tax of another state, and if applicable, any federal luxury or other tax, on the total purchase price. The rate of such combined tax is 8.875% in New York City and ranges from 7% to 8.625% elsewhere in New York.

12. Export and Permits It is the purchaser's sole responsibility to identify and obtain any necessary export, import, firearm, endangered species or other permit for the lot. Any symbols or notices in the sale catalogue reflect Sotheby's reasonable opinion at the time of cataloguing and are for bidders' general guidance only; Sotheby's and the Consignor make no representations or warranties as to whether any lot is or is not subject to export or import restrictions or any embargoes.

13. Governing Law and Jurisdiction These Conditions of Sale and Terms of Guarantee, as well as bidders', the purchaser's and our respective rights and obligations hereunder, shall be governed by and construed and enforced in accordance with the laws of the State of New York. By bidding at an auction, whether present in person or by agent, order bid, telephone, online or other means, all bidders including the purchaser, shall be deemed to have consented to the exclusive jurisdiction of the state courts of, and the federal courts sitting in, the State of New York. All parties agree, however, that Sotheby's shall retain the right to bring proceedings in a court other than the state and federal courts sitting in the State of New York.

14. Packing and Shipping We are not responsible for the acts or omissions in our packing or shipping of purchased lots or of other carriers or packers of purchased lots, whether or not

recommended by us. Packing and handling of purchased lots is at the entire risk of the purchaser.

15. Limitation of Liability In no event will our liability to a purchaser exceed the purchase price actually paid.

16. Data Protection Sotheby's will use information provided by its clients (or which Sotheby's otherwise obtains from eBay, Invaluable or other sources relating to its clients) for the provision of auction and other art-related services, loan services, client administration, marketing and otherwise to manage and operate its business, or as required by law, in accordance with Sotheby's Privacy Policy. This will include information such as the client's name and contact details, proof of identity, financial information, records of the client's transactions, and preferences. Some gathering of information about Sotheby's clients will take place using technical means to identify their preferences in order to provide a higher quality of service to them. Sotheby's may also disclose the client information to other Sotheby's Companies and/or third parties acting on their behalf to provide services for these purposes.

Sometimes, Sotheby's may also disclose this information to carefully selected third parties for their own marketing purposes. If you do not wish your details to be used for this purpose, please email enquiries@sothebys.com.

If the client provides Sotheby's with information that is defined by European data protection laws as "sensitive", the client agrees that it may be used for the purposes set out above.

In the course of these disclosures, personal data collected in the European Economic Area may be disclosed to countries outside the European Economic Area. Although such countries may not have legislation that protects a client's personal information, Sotheby's shall take great care to keep such information secure and in accordance with European data protection principles. By agreeing to these Conditions of Sale, the client is agreeing to such disclosure.

Please be aware that Sotheby's

may film auctions or other activities on Sotheby's premises and that such recordings may be transmitted over the Internet via Sotheby's website, the eBay website, the Invaluable website and other Online Platforms. Telephone bids may be recorded.

Under European data protection laws, a client may object, by request and free of charge, to the processing of their information for certain purposes, including direct marketing, and may access and rectify personal data relating to them and may obtain more information about Sotheby's data protection policies by writing to Sotheby's, 34-35 New Bond Street, London W1A 2AA, or 1334 York Avenue, New York, NY 10021, Attn: Compliance, or emailing enquiries@sothebys.com. Sotheby's use of information collected about eBay users may differ and is governed by the terms of the eBay Privacy Policy and Sotheby's on eBay Live Auction Platform Privacy Policy, which can be found on the Sotheby's on eBay Live Auction Website. Sotheby's use of information collected about Invaluable users may differ and is governed by the terms of the Invaluable Privacy Policy and Sotheby's on Invaluable Online Platform Privacy Policy, which can be found on the Sotheby's on Invaluable Live Auction Website.

TERMS OF GUARANTEE

As set forth below and in the Conditions of Sale, for all lots Sotheby's guarantees that the authorship, period, culture or origin (collectively, "Authorship") of each lot in this catalogue is as set out in the **BOLD** or **CAPITALIZED** type heading in the catalogue description of the lot, as amended by oral or written salesroom notes or announcements. Purchasers should refer to the Glossary of Terms, if any, for an explanation of the terminology used in the **Bold** or **Capitalized** type heading and the extent of the Guarantee. Sotheby's makes no warranties whatsoever, whether express or implied, with respect to any material in the catalogue other than that appearing in the **Bold** or **Capitalized** heading and subject to the exclusions below.

In the event Sotheby's in its reasonable opinion deems that the conditions of the Guarantee have been satisfied, it shall refund to the original purchaser of record the hammer price and applicable Buyer's Premium paid for the lot by the original purchaser of record.

This Guarantee is provided for a period of five (5) years from the date of the relevant auction, is solely for the benefit of the original purchaser of record at the auction and may not be transferred to any third party. To be able to claim under this Guarantee of Authorship, the original purchaser of record must: (i) notify Sotheby's in writing within three (3) months of receiving any information that causes the original purchaser of record to question the accuracy of the Bold or Capitalized type heading, specifying the lot number, date of the auction at which it was purchased and the reasons for such question; and (ii) return the Lot to Sotheby's at the original selling location in the same condition as at the date of sale to the original purchaser of record and be able to transfer good title to the Lot, free from any third party claims arising after the date of such sale.

Sotheby's has discretion to waive any of the above requirements. Sotheby's may require the original purchaser of record to obtain at the original purchaser of record's cost the reports of two independent and recognized experts in the field, mutually acceptable to Sotheby's and the original purchaser of record. Sotheby's shall not be bound by any reports produced by the original purchaser of record, and reserves the right to seek additional expert advice at its own expense. It is specifically understood and agreed that the rescission of a sale and the refund of the original purchase price paid (the successful hammer price, plus the buyer's premium) is exclusive and in lieu of any other remedy which might otherwise be available as a matter of law, or in equity. Sotheby's and the Consignor shall not be liable for any incidental or consequential damages incurred or claimed, including without limitation, loss of profits or interest.

ADDITIONAL TERMS AND CONDITIONS FOR LIVE ONLINE BIDDING

The following terms and conditions (the "Online Terms") provide important information related to live online bidding via BIDnow, eBay, Invaluable, and any other Online Platform through which bidding is made available ("Online Platforms").

These Conditions are in addition to and subject to the same law and our standard terms and conditions of sale, including the authenticity guarantee and any other terms and are not intended in any way to replace them. By participating in this sale via any Online Platform, you acknowledge that you are bound by the Conditions of Sale applicable in the relevant sale and by these additional Conditions.

1. The procedure for placing bids via Online Platforms is a one-step process; as soon as the "Bid Now" button is clicked, a bid is submitted. By placing a bid via any Online Platform, you accept and agree that bids submitted in this way are final and that you will not under any circumstances be permitted to amend or retract your bid. If a successful bid is sent to Sotheby's from your computer, phone, tablet, or any other device, you irrevocably agree to pay the full purchase price, including buyer's premium and all applicable taxes and other applicable charges.

2. If you have the leading bid, it will be indicated on the screen with the statement "Bid with you" (on BIDNow) or "you're the highest bidder" (on eBay) or "Bid with you" (on Invaluable). If a bid is placed online simultaneously with a bid placed by a bidder in the room or on the telephone (a "floor" bid), the "floor" bid generally will take precedence; the auctioneer will have the final discretion to determine the successful bidder or to reopen bidding. The auctioneer's decision is final.

3. The next bidding increment is shown on the screen for your convenience. The auctioneer has discretion to vary bidding increments for bidders in

the auction room and on the telephones, but bidders using Online Platforms may not be able to place a bid in an amount other than a whole bidding increment. All bidding for this sale will be in the domestic currency of the sale location, and online bidders will not be able to see the currency conversion board that may be displayed in the auction room.

4. The record of sale kept by Sotheby's will be taken as absolute and final in all disputes. In the event of a discrepancy between any online records or messages provided to you and the record of sale kept by Sotheby's, the record of sale will govern.

5. Online bidders are responsible for making themselves aware of all salesroom notices and announcements. All sale room notices will be read by the auctioneer at the beginning, where appropriate, or during the sale prior to a relevant lot being offered for sale. Sotheby's recommends that online bidders log on at least ten minutes before the scheduled start of the auction to ensure that you have heard all announcements made by the auctioneer at the beginning of the sale.

6. Sotheby's reserves the right to refuse or revoke permission to bid via Online Platforms and to remove bidding privileges during a sale.

7. Purchase information shown in the "Account Activity" section of BIDnow, the "Purchase History" section of the "My eBay" page on eBay and the "Account Activity" section of the "My Invaluable" page on Invaluable is provided for your convenience only. Successful bidders will be notified and invoiced by Sotheby's after the sale. In the event of any discrepancy between any online purchase information and the invoice sent to you by Sotheby's following the respective sale, the invoice prevails. Terms and conditions for payment and collection of property remain the same regardless of how the winning bid was submitted.

8. Sotheby's offers online bidding as a convenience to our clients. Sotheby's will not be responsible

for any errors or failures to execute bids placed via Online Platforms, including, without limitation, errors or failures caused by (i) a loss of connection to the internet or to the BIDnow, eBay, Invaluable or other Online Platform software by either Sotheby's or the client; (ii) a breakdown or problem with the BIDnow, eBay, Invaluable or other Online Platform software; or (iii) a breakdown or problem with a client's internet connection, mobile network or computer. Sotheby's is not responsible for any failure to execute an online bid or for any errors or omissions in connection therewith.

9. Live online bidding via all Online Platforms will be recorded.

10. In the event of any conflict between these Online Terms and Sotheby's Conditions of Sale and Terms of Guarantee, Sotheby's Conditions of Sale and Terms of Guarantee will control.

11. In the event of any conflict between these Online Terms and any term in any agreement between the User and eBay, these Online Terms will control for purposes of all Sotheby's auctions.

12. In the event of any conflict between these Online Terms and any term in any agreement between the User and Invaluable, these Online Terms will control for purposes of all Sotheby's auctions.

BUYING AT AUCTION

The following will help in understanding the auction buying process as well as some of the terms and symbols commonly used in an auction catalogue. All bidders should read the Conditions of Sale and Terms of Guarantee in this catalogue, as well as the Glossary or any other notices. By bidding at auction, bidders are bound by the Conditions of Sale and Terms of Guarantee, as amended by any oral announcement or posted notices, which together form the sale contract among Sotheby's, the seller (consignor) of the lot and any bidders, including the successful bidder (purchaser).

1. SYMBOL KEY

□ Reserves

Unless indicated by a box (□), all lots in this catalogue are offered subject to a reserve. A reserve is the confidential minimum hammer price at which a lot will be sold. The reserve is generally set at a percentage of the low estimate and will not exceed the low estimate of the lot. If any lots in the catalogue are offered without reserve, such lots will be designated by a box (□). If every lot in a catalogue is offered without a reserve, the Conditions of Sale will so state and this symbol will not be used for each lot.

○ Guaranteed Property

The seller of lots with this symbol has been guaranteed a minimum price from one auction or a series of auctions. This guarantee may be provided by Sotheby's or jointly by Sotheby's and a third party. Sotheby's and any third parties providing a guarantee jointly with Sotheby's benefit financially if a guaranteed lot is sold successfully and may incur a loss if the sale is not successful. If the Guaranteed Property symbol for a lot is not included in the printing of the auction catalogue, a pre-sale or pre-lot announcement will be made indicating that there is a guarantee on the lot.

△ Property in which Sotheby's has an Ownership Interest

Lots with this symbol indicate that Sotheby's owns the lot in whole or in part or has an economic interest in the lot equivalent to an ownership interest.

⇒ Irrevocable Bids

Lots with this symbol indicate that a party has provided Sotheby's with an irrevocable bid on the lot that will be executed during the sale at a value that ensures that the lot will sell. The irrevocable bidder, who may bid in excess of the irrevocable bid, will be compensated based on the final hammer price in the event he or she is not the successful bidder or may receive a fixed fee in the event he or she is the successful bidder. If the irrevocable bidder is the successful bidder, the fixed fee (if applicable) for providing the irrevocable bid may be netted

against the irrevocable bidder's obligation to pay the full purchase price for the lot and the purchase price reported for the lot shall be net of such fixed fee. If the irrevocable bid is not secured until after the printing of the auction catalogue, a pre-sale or pre-lot announcement will be made indicating that there is an irrevocable bid on the lot. If the irrevocable bidder is advising anyone with respect to the lot, Sotheby's requires the irrevocable bidder to disclose his or her financial interest in the lot. If an agent is advising you or bidding on your behalf with respect to a lot identified as being subject to an irrevocable bid, you should request that the agent disclose whether or not he or she has a financial interest in the lot.

∨ Interested Parties

Lots with this symbol indicate that parties with a direct or indirect interest in the lot may be bidding on the lot, including (i) the beneficiary of an estate selling the lot, or (ii) the joint owner of a lot. If the interested party is the successful bidder, they will be required to pay the full Buyer's Premium. In certain instances, interested parties may have knowledge of the reserve. In the event the interested party's possible participation in the sale is not known until after the printing of the auction catalogue, a pre-sale or pre-lot announcement will be made indicating that interested parties may be bidding on the lot.

◎ Restricted Materials

Lots with this symbol have been identified at the time of cataloguing as containing organic material which may be subject to restrictions regarding import or export. The information is made available for the convenience of bidders and the absence of the symbol is not a warranty that there are no restrictions regarding import or export of the Lot; bidders should refer to Condition 12 of the Conditions of Sale. Please also refer to the section on Endangered Species in the information on Buying at Auction.

II Monumental

Lots with this symbol may, in our opinion, require special handling or shipping services due to size

or other physical considerations. Bidders are advised to inspect the lot and to contact Sotheby's prior to the sale to discuss any specific shipping requirements.

📞 Premium Lot

In order to bid on "Premium Lots" (📞 in print catalogue or 📞 in eCatalogue) you must complete the required Premium Lot pre-registration application. You must arrange for Sotheby's to receive your pre-registration application at least three working days before the sale. Sotheby's may require such necessary financial references, guarantees, deposits and/or such other security in its absolute discretion as security for any client wishing to bid at auction. Please bear in mind that we are unable to obtain financial references over weekends or public holidays. Sotheby's decision whether to accept any pre-registration application shall be final. If your application is accepted you will be provided with a special paddle number. The Bidnow online bidding service is not available for Premium Lots.

2. BEFORE THE AUCTION

The Catalogue A catalogue prepared by Sotheby's is published for every scheduled live auction and is available prior to the sale date. The catalogue will help familiarize you with property being offered at the designated auction. Catalogues may be purchased at Sotheby's or by subscription in any categories. For information, please call +1 212 606 7000 or visit sothebys.com. Prospective bidders should also consult sothebys.com for the most up to date cataloguing of the property in this catalogue.

Estimates Each lot in the catalogue is given a low and high estimate, indicating to a prospective buyer a range in which the lot might sell at auction. When possible, the estimate is based on previous auction records of comparable pieces. The estimates are determined several months before a sale and are therefore subject to change upon further research of the property, or to reflect market conditions or currency fluctuations.

Estimates should not be relied upon as a representation or prediction of actual selling prices.

Provenance In certain circumstances, Sotheby's may print in the catalogue the history of ownership of a work of art if such information contributes to scholarship or is otherwise well known and assists in distinguishing the work of art. However, the identity of the seller or previous owners may not be disclosed for a variety of reasons. For example, such information may be excluded to accommodate a seller's request for confidentiality or because the identity of prior owners is unknown given the age of the work of art.

Specialist Advice Prospective bidders may be interested in specific information not included in the catalogue description of a lot. For additional information, please contact either a Sotheby's specialist in charge of the sale (all of whom are listed in the front of the catalogue), or Sotheby's Client Services Department. You may also request a condition report from the specialist in charge.

The Exhibition An exhibition of the auction property will be held the week prior to the auction on the days listed in the front of the catalogue. There you will have the opportunity to view, inspect and evaluate the property yourself, or with the help of a Sotheby's specialist.

Salesroom Notices Salesroom notices amend the catalogue description of a lot after our catalogue has gone to press. They are posted in the viewing galleries and salesroom or are announced by the auctioneer. Please take note of them.

Registration Sotheby's may require such necessary financial references, guarantees, deposits and/or such other security, in its absolute discretion, as security for your bid. If you are not successful on any lot, Sotheby's will arrange for a refund (subject to any right of set off) of the deposit amount paid by you without interest within 14 working

days of the date of the sale. Any exchange losses or fees associated with the refund shall be borne by you. Registration to bid on Premium Lots must be done at least 3 business days prior to the sale.

3. DURING THE AUCTION

The Auction Auctions are open to the public without any admission fee or obligation to bid. The auctioneer introduces the objects for sale — known as “lots” — in numerical order as listed in the catalogue. Unless otherwise noted in the catalogue or by an announcement at the auction, Sotheby’s acts as agent on behalf of the seller and does not permit the seller to bid on his or her own property. It is important for all bidders to know that the auctioneer may open the bidding on any lot by placing a bid on behalf of the seller. The auctioneer may further bid on behalf of the seller, up to the amount of the reserve, by placing responsive or consecutive bids for a lot. The auctioneer will not place consecutive bids on behalf of the seller above the reserve.

Bidding in Person If you would like to bid, you must register for a paddle upon entering the salesroom. The paddle is numbered so as to identify you to the auctioneer. To register, you will need a form of identification such as a driver’s license, a passport or some other type of government issued identification. If you are a first-time bidder, you will also be asked for your address, phone number and signature in order to create your account. If you are bidding for someone else, you will need to provide a letter from that person authorizing you to bid on that person’s behalf. Issuance of a bid paddle is in Sotheby’s sole discretion.

Once the first bid has been placed, the auctioneer asks for higher bids, in increments determined by the auctioneer. To place your bid, simply raise your paddle until the auctioneer acknowledges you. You will know when your bid has been acknowledged; the auctioneer will not mistake a random gesture for a bid.

If you wish to register to bid on a Premium Lot, please see the paragraph above.

All lots sold will be invoiced to the name and address in which the paddle has been registered and cannot be transferred to other names and addresses. Sotheby’s reserves the right to refuse to accept payment from a source other than the buyer of record.

Absentee Bidding If it is not possible for you to attend the auction in person, you may place your bid ahead of time. In the back of every catalogue there is an absentee bid form, which you can use to indicate the item you wish to bid on and the maximum bid you are willing to make. Return the completed absentee bid form to Sotheby’s either by mail or fax. When the lot that you are interested in comes up for sale, a Sotheby’s representative will execute the bid on your behalf, making every effort to purchase the item for as little as possible and never exceeding your limit. This service is free and confidential. For detailed instructions and information, please see the Absentee Bid Form and Guide for Absentee Bidders instructions at the back of this catalogue.

Telephone Bidding In some circumstances, we offer the ability to place bids by telephone live to a Sotheby’s representative on the auction floor. Please contact the Bid Department prior to the sale to make arrangements or to answer any questions you may have. Telephone bids are accepted only at Sotheby’s discretion and at the caller’s risk. Calls may also be recorded at Sotheby’s discretion. By bidding on the telephone, prospective buyers consent thereto.

Online Bidding If you cannot attend the auction, it may be possible to bid online via BIDnow, eBay, Invaluable or other Online Platforms for selected sales. This service is free and confidential. For information about registering to bid via BIDnow, please see www.sothebys.com. For information about registering to bid on eBay, please see www.ebay.com/ sothebys. For information about

registering to bid on Invaluable, please see www.invaluable.com/invaluable/help.cfm. Bidders utilizing any online platform are subject to the Online Terms as well as the relevant Conditions of Sale. Online bidding may not be available for Premium Lots.

Employee Bidding Sotheby’s employees may bid in a Sotheby’s auction only if the employee does not know the reserve and if the employee fully complies with Sotheby’s internal rules governing employee bidding.

US Economic Sanctions The United States maintains economic and trade sanctions against targeted foreign countries, groups and organizations. There may be restrictions on the import into the United States of certain items originating in sanctioned countries, including Burma, Cuba, Iran, North Korea and Sudan. The purchaser’s inability to import any item into the US or any other country as a result of these or other restrictions shall not justify cancellation or rescission of the sale or any delay in payment. Please check with the specialist department if you are uncertain as to whether a lot is subject to these import restrictions, or any other restrictions on importation or exportation.

Hammer Price and the Buyer’s Premium For lots which are sold, the last price for a lot as announced by the auctioneer is the hammer price. A buyer’s premium will be added to the hammer price and is payable by the purchaser as part of the total purchase price. The buyer’s premium will be the amount stated in the Conditions of Sale.

Currency Board As a courtesy to bidders, a currency board is operated in many salesrooms. It displays the lot number and current bid in both U.S. dollars and foreign currencies. Exchange rates are approximations based on recent exchange rate information and should not be relied upon as a precise invoice amount. Sotheby’s assumes no responsibility for any error or omission in foreign or United States currency amounts shown.

Results Successful absentee bidders will be notified after the sale. Absentee bidders will receive a list of sale results if they enclose a stamped self-addressed envelope with their absentee bid form. Printed lists of auction prices are available at our galleries approximately three weeks following each auction and are sent on request to catalogue purchasers and subscribers. Results may also be obtained online at sothebys.com.

International Auctions If you need assistance placing bids, obtaining condition reports or receiving auction results for a Sotheby’s sale outside the United States, please contact our International Client Services Department.

4. AFTER THE AUCTION

Payment If your bid is successful, you can go directly to Post Sale Services to make payment arrangements. Otherwise, your invoice will be mailed to you. The final price is determined by adding the buyer’s premium to the hammer price on a per-lot basis. Sales tax, where applicable, will be charged on the entire amount. Payment is due in full immediately after the sale. However, under certain circumstances, Sotheby’s may, in its sole discretion, offer bidders an extended payment plan. Such a payment plan may provide an economic benefit to the bidder. Credit terms should be requested at least one business day before the sale. However, there is no assurance that an extended payment plan will be offered. Please contact Post Sale Services or the specialist in charge of the sale for information on credit arrangements for a particular lot. Please note that Sotheby’s will not accept payments for purchased lots from any party other than the purchaser, unless otherwise agreed between the purchaser and Sotheby’s prior to the sale.

Payment by Cash It is against Sotheby’s general policy to accept single or multiple related payments in the form of cash or cash equivalents in excess of the local currency equivalent of US \$10,000. It is Sotheby’s policy to request any new clients or purchasers preferring

to make a cash payment to provide: verification of identity (by providing some form of government issued identification containing a photograph, such as a passport, identity card or driver's license), confirmation of permanent address and identification of the source of the funds.

Payment by Credit

Cards Sotheby's accepts payment by credit card for Visa, MasterCard, and American Express only. Credit card payments may not exceed \$50,000 per sale. Payment by credit card may be made (a) online at <https://www.sothebys.com/en/invoice-payment.html>, (b) by calling in to Post Sale Services at +1 212 606 7444, or (c) in person at Sotheby's premises at the address noted in the catalogue.

Payment by Check Sotheby's accepts personal, certified, banker's draft and cashier's checks drawn in US Dollars (made payable to Sotheby's). While personal and company checks are accepted, property will not be released until such checks have cleared, unless you have a pre-arranged check acceptance agreement. Application for check clearance can be made through the Post Sale Services.

Certified checks, banker's drafts and cashier's checks are accepted at Sotheby's discretion and provided they are issued by a reputable financial institution governed by anti-money laundering laws. Instruments not meeting these requirements will be treated as "cash equivalents" and subject to the constraints noted in the prior paragraph titled "Payment By Cash".

Payment by Wire Transfer To pay for a purchase by wire transfer, please refer to the payment instructions on the invoice provided by Sotheby's or contact Post Sale Services to request instructions.

Sales and Use Tax New York sales tax is charged on the hammer price, buyer's premium and any other applicable charges on any property picked up or delivered in New York State, regardless of the state or country in which the purchaser resides or does business.

Purchasers who wish to use their own shipper who is not a considered a "common carrier" by the New York Department of Taxation and Finance will be charged New York sales tax on the entire charge regardless of the destination of the property. Please refer to "Information on Sales and Use Tax Related to Purchases at Auction" in the back of the catalogue.

Collection and Delivery

Post Sale Services
+ 1 212 606 7444
FAX: + 1 212 606 7043
uspostalservices@sothebys.com

Once your payment has been received and cleared, property may be released. Unless otherwise agreed by Sotheby's, all purchases must be removed by the 30th calendar day following a sale.

Shipping Services Sotheby's offers a comprehensive shipping service to meet all of your requirements. If you received a shipping quotation or have any questions about the services we offer please contact us.

Collecting your Property As a courtesy to purchasers who come to Sotheby's to collect property, Sotheby's will assist in the packing of lots, although Sotheby's may, in the case of fragile articles, choose not to pack or otherwise handle a purchase.

If you are using your own shipper to collect property from Sotheby's, please provide a letter of authorization and kindly instruct your shipper that they must provide a Bill of Lading prior to collection. Both documents must be sent to Post Sale Services prior to collection.

The Bill of Lading must include: the purchaser's full name, the full delivery address including the street name and number, city and state or city and country, the sale and lot number.

Sotheby's will contact your shipper within 24 hours of receipt of the Bill of Lading to confirm the date and time that your property can be collected. Property will not be released without this confirmation and your shipper must bring the

same Bill of Lading that was faxed to Sotheby's when collecting. All property releases are subject to the receipt of cleared funds.

Please see the Conditions of Sale for further details.

Endangered Species Certain property sold at auction, for example, items made of or incorporating plant or animal materials such as coral, crocodile, ivory, whalebone, tortoiseshell, rhinoceros horn, rosewood, etc., irrespective of age or value, may require a license or certificate prior to exportation and additional licenses or certificates upon importation to another country. Sotheby's suggests that buyers check on their government wildlife import requirements prior to placing a bid. Please note that the ability to obtain an export license or certificate does not ensure the ability to obtain an import license or certificate in another country, and vice versa. It is the purchaser's responsibility to obtain any export or import licenses and/or certificates as well as any other required documentation. In the case of denial of any export or import license or of delay in the obtaining of such licenses, the purchaser is still responsible for making on-time payment of the total purchase price for the lot.

Although licenses can be obtained to export some types of endangered species, other types may not be exported at all, and other types may not be resold in the United States. Upon request, Sotheby's is willing to assist the purchaser in attempting to obtain the appropriate licenses and/or certificates. However, there is no assurance that an export license or certificate can be obtained. Please check with the specialist department or the Shipping Department if you are uncertain as to whether a lot is subject to these export/import license and certificate requirements, or any other restrictions on exportation.

The Art Loss Register As part of Sotheby's efforts to support only the legitimate art market and to combat the illegitimate market in stolen property, Sotheby's has

retained the Art Loss Register to check all uniquely identifiable items offered for sale in this catalogue that are estimated at more than the equivalent of US\$1,500 against the Art Loss Register's computerized database of objects reported as stolen or lost. The Art Loss Register is pleased to provide purchasers with a certificate confirming that a search has been made. All inquiries regarding search certificates should be directed to The Art Loss Register, First Floor, 63-66 Hatten Garden, London EC1N 8LE or by email at artloss@artloss.com. The Art Loss Register does not guarantee the provenance or title of any catalogued item against which they search, and will not be liable for any direct or consequential losses of any nature howsoever arising. This statement and the ALR's service do not affect your rights and obligations under the Conditions of Sale applicable to the sale.

SELLING AT AUCTION

If you have property you wish to sell, Sotheby's team of specialists and client services representatives will assist you through the entire process. Simply contact the appropriate specialist (specialist departments are listed in the back of this catalogue), General Inquiries Department or a Sotheby's regional office representative for suggestions on how best to arrange for evaluation of your property.

Property Evaluation There are three general ways evaluation of property can be conducted:

(1) In our galleries

You may bring your property directly to our galleries where our specialists will give you auction estimates and advice. There is no charge for this service, but we request that you telephone ahead for an appointment. Inspection hours are 9:30 am to 5 pm, Monday through Friday.

(2) By photograph

If your property is not portable, or if you are not able to visit our galleries, you may bring in or send a clear photograph of each item. If you have

a large collection, a representative selection of photographs will do. Please be sure to include the dimensions, artist's signature or maker's mark, medium, physical condition and any other relevant information. Our specialists will provide a free preliminary auction estimate subject to a final estimate upon first-hand inspection.

(3) In your home

Evaluations of property can also be made in your home. The fees for such visits are based on the scope and diversity of property, with travel expenses additional. These fees may be rebated if you consign your property for sale at Sotheby's. If there is considerable property in question, we can arrange for an informal "walkthrough."

Once your property has been evaluated, Sotheby's representatives can then help you determine how to proceed should you wish to continue with the auction process. They will provide information regarding sellers' commission rates and other charges, auction venue, shipping and any further services you may require.

SOTHEBY'S SERVICES

Sotheby's also offers a range of other services to our clients beyond buying and selling at auction. These services are summarized below. Further information on any of the services described below can be found at sothebys.com.

Valuations and Appraisals

Sotheby's Valuations and Appraisals Services offers advice regarding personal property assets to trusts, estates, and private clients in order to help fiduciaries, executors, advisors, and collectors meet their goals. We provide efficient and confidential advice and assistance for all appraisal and auction services. Sotheby's can prepare appraisals to suit a variety of needs, including estate tax and planning, insurance, charitable contribution and collateral loan. Our appraisals are widely accepted by the Internal Revenue Service, tax and estate planning professionals,

and insurance firms. In the event that a sale is considered, we are pleased to provide auction estimates, sales proposals and marketing plans. When sales are underway, the group works closely with the appropriate specialist departments to ensure that clients' needs are met promptly and efficiently.

Financial Services Sotheby's offers a wide range of financial services including advances on consignments, as well as loans secured by art collections not intended for sale.

Museum Services Tailored to meet the unique needs of museums and nonprofits in the marketplace, Museum Services offers personal, professional assistance and advice in areas including appraisals, deaccessions, acquisitions and special events.

Corporate Art Services Devoted to servicing corporations, Sotheby's Corporate Art Services Department can prepare appraisal reports, advise on acquisitions and deaccessions, manage all aspects of consignment, assist in developing arts-management strategies and create events catering to a corporation's needs.

INFORMATION ON SALES AND USE TAX RELATED TO PURCHASES AT AUCTION

To better assist our clients, we have prepared the following information on Sales and Use Tax related to property purchased at auction.

Why Sotheby's Collects Sales Tax

Virtually all State Sales Tax Laws require a corporation to register with the State's Tax Authorities and collect and remit sales tax if the corporation maintains a presence within the state, such as offices. In the states that impose sales tax, Tax Laws require an auction house, with a presence in the state, to register as a sales tax collector, and remit sales tax collected to the state. New York sales tax is charged on the hammer price, buyer's premium and any other applicable charges on

any property picked up or delivered in New York, regardless of the state or country in which the purchaser resides or does business.

Where Sotheby's Collects Sales Tax

Sotheby's is currently registered to collect sales tax in the following states: California, Colorado, Connecticut, Florida, Illinois, Maryland, Massachusetts, Minnesota, Missouri, New Jersey, New York, Ohio, Pennsylvania, Texas and Washington. For any property collected or received by the purchaser in New York City, such property is subject to sales tax at the existing New York State and City rate of 8.875%.

Sotheby's Arranged Shipping

If the property is delivered into any state in which Sotheby's is registered, Sotheby's is required by law to collect and remit the appropriate sales tax in effect in the state where the property is delivered.

Client Arranged Shipping

Property collected from Sotheby's New York premises by a common carrier hired by the purchaser for delivery at an address outside of New York is not subject to New York Sales Tax, but if the property is delivered into any state in which Sotheby's is registered, Sotheby's is required by law to collect and remit the appropriate sales tax in effect in the state where the property is delivered. New York State recognizes shippers such as the United States Postal Service, United Parcel Service, FedEx, or the like as "common carriers". If a purchaser hires a shipper other than a common carrier to pick up property, Sotheby's will collect New York sales tax at a rate of 8.875% regardless of the ultimate destination of the goods. If a purchaser utilizes a freight-forwarder who is registered with the Transportation Security Administration ("TSA") to deliver property outside of the United States, no sales tax would be due on this transaction.

Where Sotheby's is Not Required to Collect Sales Tax

Sotheby's is not required to collect sales tax on property delivered to states other than those listed above.

If the property is delivered to a state where Sotheby's is not required to collect sales tax, it is the responsibility of the purchaser to self-assess any sales or use tax and remit it to taxing authorities in that state.

Sotheby's is not required to collect sales tax for property delivered to the purchaser outside of the United States.

Restoration and Other Services

Regardless of where the property is subsequently transported, if any framing or restoration services are performed on the property in New York, it is considered to be a delivery of the property to the purchaser in New York, and Sotheby's will be required to collect the 8.875% New York sales tax.

Certain Exemptions

Most states that impose sales taxes allow for specified exemptions to the tax. For example, a registered re-seller such as a registered art dealer may purchase without incurring a tax liability, and Sotheby's is not required to collect sales tax from such re-seller. The art dealer, when re-selling the property, may be required to charge sales tax to its client, or the client may be required to self-assess sales or use tax upon acquiring the property.

Local Tax Advisors

As sales tax laws vary from state to state, Sotheby's recommends that clients with questions regarding the application of sales or use taxes to property purchased at auction seek tax advice from their local tax advisors.

IMPORTANT NOTICES

Regarding Jewelry Statements in the catalogue regarding the condition of lots in this sale usually appear in the description. However, the absence of any such reference does not imply that a lot is in perfect condition or completely free from wear or imperfections. Sotheby's will be pleased to offer condition reports of the lots to potential purchasers. Please call the jewelry representatives as set forth in the front of the catalogue.

Any gemological terms used in the catalogue have the same meanings as set forth in the Federal Trade Commission's guides for the jewelry, precious metals and pewter industries.

A copy of these guidelines is available from Sotheby's upon request.

Regarding Diamonds Sotheby's shares the concerns expressed by the United Nations Security Council with respect to uncut diamonds potentially coming from Angola and Sierra Leone. We will comply fully with any obligations imposed in connection with the Security Council's resolutions regarding these matters.

Treatment and Condition of Gemstones Traditionally, gemstones have been treated by a variety of techniques to enhance color and generally to improve their appearance. Typically, rubies and sapphires have been heat treated and emeralds have been treated by oil or resin to improve color and clarity. These or other techniques, such as dyeing, irradiation, coating and impregnation, may be used on other gemstones.

Although it is widely believed that heat treatments are permanent, purchasers should assume that any treatment may not be permanent in nature and that over time special care of the stone may be required. Prospective purchasers are reminded that, unless the catalogue description specifically states that a stone is natural, we have assumed that some form of treatment may have been used and that such treatment may not be permanent. Our presale estimates reflect this assumption.

To the extent that Sotheby's has laboratory reports containing specific information on the treatment of a stone, these reports are made available for review by potential purchasers. Available reports from internationally recognized gemological laboratories will be noted in the description of the item. New forms of treatments and new scientific methods to discern them are constantly being developed. Consequently,

there may be a lack of consensus among laboratories as to whether gemstones have been treated, the extent of the treatment or the permanence of the treatment.

References in the catalogue descriptions to certificates or reports issued by gemological laboratories are included only for the information of bidders and Sotheby's accepts no responsibility for the accuracy, terms or information contained in such certificates or reports.

Statements in the catalogue regarding the condition of lots in this sale usually appear in the description. However, the absence of any such reference does not imply that a lot is in perfect condition or completely free from wear or imperfections. Sotheby's will be pleased to offer condition reports on all lots of the sale to potential purchasers. Please call the jewelry representatives set forth in the front of the catalogue.

Gemological Certificates and Reports References in the catalogue descriptions to certificates or reports issued by gemological laboratories are provided only for the information of bidders, and Sotheby's does not guarantee and accepts no responsibility for the accuracy, terms or information contained in such certificates or reports. Please also note that laboratories may differ in their assessment of a gemstone (including its origin and presence, type and extent of treatments) and their certificates or reports may contain different results.

Certificates of Authenticity Various manufacturers may not issue certificates of authenticity upon request. Except as specifically noted in the catalogue, Sotheby's will not be required to furnish the purchaser with a certificate of authenticity from the manufacturer at any time. Unless the requirements for a rescission of the sale under the Terms of Guarantee are satisfied, the failure of a manufacturer to issue a certificate will not constitute grounds to rescind the sale.

Country of Origin While Sotheby's attempts to obtain accurate information on the country of origin of the gemstones, in accordance with paragraph 1 of the Conditions of Sale, Sotheby's does not guarantee the correctness of the catalogue or other description of the gemstones including the country of origin.

Stone Weights Weights of stones printed in the catalogue and preceded by the words "stated to be," "about" or "approximately" are not guaranteed by Sotheby's. Prospective buyers are reminded that all lots are sold as shown.

Regarding Condition of Watches Prospective buyers should satisfy themselves by personal inspection as to the condition of each lot. If the prospective buyer is not able to inspect the piece, as a courtesy to our clients, we are pleased to provide an opinion of the condition of the property on request. However, since we are not professional watch restorers, any statement of opinion listed is purely subjective and is not a statement of fact. Condition reports may not specify all mechanical replacements or imperfections to the movement, case, dial, pendulum, separate base(s) or dome or any other replacements or additions to the lot. The absence of a condition report or the absence of a reference to damage in the catalogue does not imply that the lot is in good condition, working order or free from restoration or repair. Watches in water-resistant cases have no warranties that are made that the watches are currently water-resistant. Please note that we do not guarantee the authenticity of any individual component parts, such as wheels, hands, crowns, crystals, screws, bracelets and leather bands, since subsequent repairs and restoration work may have resulted in the replacement of original parts.

In addition, certain manufacturers will not service or repair pieces if all of the component parts are not original to the piece. The refusal of a manufacturer to service or repair a piece on this

basis does not constitute grounds to rescind the sale under the Terms of Guarantee.

Furthermore, in reference to bands, we do not guarantee the material of manufacture. Please be advised that the purchaser will be responsible for complying with any applicable export and import matters, particularly in relation to endangered species and the United States Department of Fish and Wildlife Services.

Payments and Pick-Up All payments to be made at Client Accounting, 1334 York Avenue. See below for dates and times.

Pick-Up: From the Jewelry Department, 6th Floor, 1334 York Avenue.

The schedule for property pick-up will be as follows:

Tuesday, 17 October
10:00 am - 5:00 pm
Wednesday, 18 October
10:00 am - 5:00 pm
Thursday, 19 October
10:00 am - 5:00 pm
Friday, 20 October
10:00 am - 5:00 pm
Monday, 23 October
10:00 am - 5:00 pm

Decorative Photography

SquareMoose
New York
+1 212 643 2505

Lot Photography

Pauline Shapiro

DIAMOND CLARITY GRADING

Clarity grading relates to the impurities in a diamond. All clarity grading is carried out under a 10x magnification. The more impurities in a diamond the lower the price per carat.

FL	Flawless	No blemishes or inclusions
IF	Internally Flawless	No inclusions and only insignificant blemishes.
VVS1 & VVS2	Very Very Slightly Included	Extremely difficult to see, visible only from the back of the stone, or small and shallow enough to be removed easily by repolishing. In VVS2, inclusions are still very difficult to see.
VS1 & VS2	Very Slightly Included	Still difficult to see with the untrained eye.
SI1 & SI2	Slightly Included	Easy (SI1) or very easy (SI2) to see with a 10x lens. When these have been located with a 10x lens, look at the stone with the naked eye and the inclusions can sometimes be spotted
I1, I2 & I3	Imperfect	May be eye-visible face up without the aid of a lens. In I3, they may threaten the stones durability.

DIAMOND COLOR GRADING

GIA	
D	The top color grades, D, E, F, for a diamond is when it looks colorless against a white background.
E	
F	
G	In near colorless diamonds, G, H, I, there is a slight trace of color which will not be apparent to the untrained eye. Stones 0.50Ct or less will look colorless.
H	
I	
	Diamonds graded J, K, L, will have notable traces of color. Small stones in this range will 'face up' colorless when mounted but larger stones will be tinted.
J	
K	
L	
	Diamonds graded M-Z will display a yellowish tint even to the untrained eye.
M	
↓	
Z	Z+ color grade indicates that the diamond is of fancy color and therefore fall into a different price bracket.
Z+	

GLOSSARY OF TERMS

The following are examples of the terminology used in this catalogue. Please note that all statements made in this catalogue are made subject to the provisions of the Conditions of Sale and Terms of Guarantee printed in this catalogue:

SIGNATURES

BOLD TYPE HEADING

When the maker's name appears in Bold Type Heading in the catalogue description, in Sotheby's opinion, the piece is by the named jeweler.

NAME OF JEWELER

When we state the name of a maker in the catalogue description below the Bold Type Heading, we mean that, in Sotheby's opinion, although unsigned, the piece is by the named jeweler.

MOUNTING BY

When we state in the catalogue description below the Bold Type Heading "Mounting by _____"; we mean that, in Sotheby's opinion, the mounting is by the jeweler, and the gemstones were not supplied by the jeweler or the piece has been altered in some way after its manufacture.

INDEX OF DIAMONDS

COLOR	CLARITY	CARAT WEIGHT	SHAPE	LOT
D	IF	3.71	Round	104
D	VVS2	5.06	Round	262
D	VS2	3.23	Marquise	289
E	IF	3.40	Cut-Cornered Rectangular	270
E	VVS1 (Potential)	6.24	Square Emerald Cut	299
E	VS2	4.14	Round	253
E	VS2	3.96	Modified Rhomboid	99
E / E	SI1 / SI2	1.51 / 1.51	Round	170
F	VS1	4.09	Emerald Cut	187
F	VS1	3.01	Pear	250
G	VS2	2.00	Round	173
G / G	VS1 / VS1	3.45 / 3.20	Square Emerald Cut	103
H	IF	3.18	Cushion Modified Brilliant	249
H	VS1	6.94	Marquise	297
H	SI1	9.51	Pear	67
H	SI1	4.37	Pear	202
I	VS1	6.01	Cut-Cornered Square Mixed Cut	90
I	VS2	4.17	Emerald Cut	56
I / J	VS2 / VS1	3.19 / 3.22	Old Mine / Old European	59
J	VS1	5.01	Round	89
J	VS2	6.78	Pear	227
J	SI1	10.96	Cut-Cornered Rectangular	294
K	VS1	6.22	Emerald Cut	84
K	VS2	5.40	Cushion	298
M	VS2	10.53	Round	27
Q-R	VS1	12.52	Cushion	274
Fancy Deep Orangy Pink	SI1	0.70	Oval	286
Fancy Brown-Pink	SI1	3.42	Marquise	80
Fancy Intense Yellow	IF	6.04	Cut-Cornered Square Step Cut	128
Fancy Intense Yellow	VS1	3.24	Square Modified Brilliant	265
Fancy Intense Yellow	VS2	3.12	Oval	53
Fancy Intense Yellow	VS2	3.05	Round	34
Fancy Intense Yellow / Fancy Yellow	SI1 / SI1	6.95 / 6.73	Pear	275
Fancy Yellow	IF	3.82	Round	300
Fancy Yellow	SI2	6.30	Round	122
Fancy Yellow / Fancy Yellow	VS2 / VS2	4.08 / 4.05	Pear	228

COLORED STONE LIST

RUBY					
SHAPE	CARAT WEIGHT	ORIGIN	TREATMENT	LAB	LOT
Oval	2.39	Burma	Heat	GIA	62
Oval	2.82	Thai	No heat	AGL	119
Oval	3.55	Burma	No heat	AGL	125

EMERALD					
SHAPE	CARAT WEIGHT	ORIGIN	TREATMENT	LAB	LOT
Oval	7.35	Colombia	Minor	AGL	71
Emerald	7.74	Colombia	Minor	AGL	88
Round	1.50	Colombia	None	AGL	96
Cabochon	Approx. 12.50	Colombia	Minor, Modern	AGL	101
Oval Bead	N/A	Colombia	Minor	AGL	105
Pear Cabochon	11.05/9.77	Colombia	Minor	AGL	107
Emerald	Approx. 2.30	Zambia	Minor	AGL	206
Square Emerald	3.20	Classic Colombia	None	AGL	263
Cut-Cornered Rectangular	Approx. 80.00	Colombia	Minor, Modern	AGL	276
Emerald	5.51	Colombia	Minor	AGL	292
Cushion/Cabochon	3.92/2.12	Colombia	Insignificant to minor/ Insignificant	AGL	100
Round	1.72/1.69	Zambia	Minor	AGL	264

SAPPHIRE					
SHAPE	CARAT WEIGHT	ORIGIN	TREATMENT	LAB	LOT
Cushion	5.19	Burma	No heat	AGL	60
Cushion	2.07	Kashmir	No heat	Gübelin	66
Star	219.81	Ceylon	No heat	AGL	143
Cushion	4.12	Burma	No heat	AGL	147
Oval	Approx. 3.90	Classic Kashmir	No heat	AGL	159
Cushion	Approx. 9.00	Ceylon	Heat & Heat	AGL & GIA	243
Cushion	5.03	Burma	No heat	AGL	267
Round Pink Sapphire	1.01/1.02	N/A	No heat	GIA	273

RING SIZES

Metric	French/Japanese	English	American
37.8252	-	A	1/2
38.4237	-	A1/2	3/4
39.0222	-	B	1
39.6207	-	B1/2	11/4
40.2192	-	C	11/2
40.8177	-	C1/2	13/4
41.4162	1	D	2
42.0147	2	D1/2	21/4
42.6132	-	E	21/2
43.2117	3	E1/2	23/4
43.8102	4	F	3
44.4087	-	F1/2	33/4
45.0072	5	G	31/4
45.6057	-	G1/2	31/2
46.2042	6	H	33/4
46.8027	-	H1/2	4
47.4012	7	I	41/4
47.9997	8	I1/2	41/2
48.5982	-	J	43/4
49.1967	9	J1/2	5
49.7952	10	K	51/4
50.3937	-	K1/2	51/2
50.9922	11	L	53/4
51.5907	-	L1/2	6
52.1892	12	M	61/4
52.7877	13	M1/2	61/2
53.4660	-	N	63/4
54.1044	14	N1/2	7
54.7428	15	O	7
55.3812	-	O1/2	71/4
56.0196	16	P	71/2
56.6580	-	P1/2	73/4
57.2964	17	Q	8

INTERNATIONAL DEPARTMENTS

For a full listing of our offices and salerooms worldwide with detailed information on all of Sotheby's services, visit sothebys.com

David Bennett
Worldwide Chairman

Gary Schuler
Chairman,
North and South America

Daniela Mascetti
Senior Specialist,
International
Worldwide Head of Scholarship

Brett O'Connor
Senior Specialist,
International

Patti Wong
Chairman, Asia
Chairman, Sotheby's Diamonds

Quek Chin Yeow
Chairman, Asia

Maarten ten Holder
Global Managing Director
Luxury & Lifestyle Division

Maria Kelly
Deputy Managing Director,
Luxury & Lifestyle Division

Andres White Correal
Director of International
Business Development

Esther Tadjiev
Director of International
Sales Development

Yang Bu
Business Director,
North America

Emma Paleschi
Senior Business Director,
Europe

Rebecca Spencer
Business Director,
Geneva

Scott Roworth
Business Director, Asia

NORTH AMERICA

NEW YORK

Gary Schuler
Carol Elkins
Frank Everett
Catharine Becket
Esther Tadjiev
Robin Wright
Quig Bruning
Kendall Reed
Nikita Manilal
+1 212 606 7392

Sotheby's Diamonds
Natasha Mahdavi
+1 212 894 1400

WEST

Carol Elkins
+1 415 772 9027
Quig Bruning
+1 917 497 1058
Yvonne Teng
+1 310 786 1864

EUROPE

GENEVA

David Bennett
Daniela Mascetti
Brett O'Connor
Olivier Wagner
Benoit Repellin

Nicholas Rayner ‡
Senior Consultant, Europe

Prince Abdul'Aziz Toussoun ‡
Associate, Europe
+41 22 908 48 49

LONDON

Jessica Wyndham
Justin Roberts
Kristian Spofforth
Andres White Correal
+44 20 7293 6409

MILAN

Sara Miconi
+39 02 295 00201
Daniela Mascetti
+41 22 908 48 49

PARIS

Gabriella Mantegani
Claire de Truchis-Lauriston
+33 1 5305 5337

AMSTERDAM

Albertine Verlinde
+31 20 550 2204

BRUSSELS

Marianna Lora
+32 2 648 0080

LUGANO

Iris Fabbri
+41 91 993 30 60

MADRID

Andres White Correal
+34 91 576 5714

MONACO

Douglas Walker
+377 93 30 8880

MUNICH

Heinrich Graf von Spreiti
+49 89 2909 5121

ROME

Luisa Lepri
+39 06 699 41791

TEL AVIV

Sigal Mordechai
+972 3 560 1666

VIENNA

Andrea Jungmann
+43 1 512 4772

ASIA

HONG KONG

Quek Chin Yeow
Flora Wong
Shanne Ng
Yvonne Chu
Julia Liu
+852 2822 8112

Sotheby's Diamonds
Lisa Chow
Joanne Ma
+852 2822 8113

CHINA

BEIJING

Lei Tang
+86 10 6408 8890

SHANGHAI

Fiona Zhang
+86 21 6288 7500

INDONESIA

Jasmine Prasetyo
+62 21 5797 3603

JAPAN

Aki Uemura
Maiko Ichikawa
+81 3 3230 2755

MALAYSIA

Walter Cheah ‡
+60 12 208 3917

PHILIPPINES

Angela Hsu
+63 917 815 0075

SINGAPORE

Esther Seet
+65 6732 8239

TAIWAN

Wendy Lin
Nicolette Chou
+886 2 2757 6689

THAILAND

Wannida Saetieo
+66 2 286 0788

Consultant ‡

INDEX OF MAKERS

Maker	Lot	Maker	Lot
Aldo Cipullo for Cartier	78	Marianne Ostier	1
Assil	215, 287	Meister	166
		Michele della Valle	277, 278
B.D. Howes	231	Mikimoto	222
Boucheron	31, 33, 43, 129, 235	Mounted by Cartier	59, 100
Buccelatti	38, 240	Mounted by J.E. Caldwell	91
Bulgari	39, 53, 79, 111, 160, 161, 194, 200	Mounted by Raymond Yard	66
		Oscar Heyman & Brothers	123, 214, 267
Cartier	8, 10, 12, 29, 30, 46, 49, 50, 51, 113, 118, 134, 205, 216, 217, 238, 239, 246	Raymond Yard	241
Chopard	40, 55, 223	René Boivin	37
		Repossi	275, 276, 281, 282
David Webb	4, 7, 15, 26, 36, 44, 47, 77, 152, 164, 165, 168, 173, 181, 182, 183, 184, 185, 187, 188, 190, 191, 192, 193, 196, 218, 283, 284, 295	Ruser	101
De Grisogono	110, 251, 269	Schlumberger for Tiffany & Co.	34, 35
Dreicer & Co.	95	Sifen Chang	271
		Sotheby's Diamonds by James de Givenchy	108
Elizabeth Gage	221	Sterlé	219
		Tiffany & Co.	5, 6, 52, 85, 117, 127, 198, 207, 249, 262, 263, 264, 265, 270, 272, 293, 301, 302, 303, 304, 305, 306, 307, 308, 309, 310
Fabergé	65	Tiffany & Co., Schlumberger Studios	76
Feyhan Mutlu	135	Trabert & Hoeffler - Mauboussin	157, 158
		Van Cleef & Arpels	2, 3, 11, 13, 14, 16, 18, 23, 24, 25, 27, 42, 54, 57, 61, 63, 72, 73, 74, 75, 121, 124, 154, 156, 169, 176, 177, 178, 179, 186, 189, 191, 195, 199, 203, 288, 296
Geoff Rowlandson	224	Verdura	197, 280
Gübelin	131		
Gucci	112	Wander	28
Harry Winston	69		
Hermès	167		
JAR	109		
Jean Dunand	65		
Lagos	201		
Leviev	237		

BOARD OF DIRECTORS

Domenico De Sole

Chairman of the Board

The Duke of Devonshire

Deputy Chairman of the Board

Tad Smith

President and

Chief Executive Officer

Jessica Bibliowicz

Linus W. L. Cheung

Kevin Conroy

Daniel S. Loeb

Olivier Reza

Marsha E. Simms

Diana L. Taylor

Dennis M. Weibling

Harry J. Wilson

**SOTHEBY'S
EXECUTIVE MANAGEMENT**

Jill Bright

Human Resources

& Administration

Worldwide

Amy Cappellazzo

Chairman

Fine Art Division

Kevin Ching

Chief Executive Officer

Asia

Adam Chinn

Chief Operating Officer

Worldwide

Lauren Gioia

Communications

Worldwide

David Goodman

Digital Development

& Marketing

Worldwide

Mike Goss

Chief Financial Officer

Scott Henry

Technology & Operations

Worldwide

Jane Levine

Chief Compliance Counsel

Worldwide

Jonathan Olsoff

General Counsel

Worldwide

Jan Prasens

Managing Director

Europe, Middle East, Russia,

India and Africa

Allan Schwartzman

Chairman

Fine Art Division

Maarten ten Holder

Global Managing Director

Luxury & Lifestyle Division

**SOTHEBY'S INTERNATIONAL
COUNCIL**

Robin Woodhead

Chairman

Sotheby's International

John Marion

Honorary Chairman

Juan Abelló

Judy Hart Angelo

Anna Catharina Astrup

Nicolas Berggruen

Philippe Bertherat

Lavinia Borromeo

Dr. Alice Y.T. Cheng

Laura M. Cha

Halit Cingilloğlu

Jasper Conran

Henry Cornell

Quinten Dreesmann

Ulla Dreyfus-Best

Jean Marc Etlin

Tania Fares

Comte Serge de Ganay

Ann Getty

Yassmin Ghandehari

Charles de Gunzburg

Ronnie F. Heyman

Shalini Hinduja

Pansy Ho

HH Prince Aynun Aga Khan

Catherine Lagrange

Edward Lee

Jean-Claude Marian

Batia Ofer

Georg von Opel

Marchesa Laudomia Pucci Castellano

David Ross

Rolf Sachs

René H. Scharf

Biggi Schuler-Voith

Judith Taubman

Olivier Widmaier Picasso

The Hon. Hilary M. Weston,

CM, CVO, OOnt



Sotheby's EST. 1744
Collectors gather here.